

# Superlofts Noorderplassen, Residential Landscaper

Marc Koehler Architects designed Peak Noorderplassen as a sculptural timber residential building that combines loft living with landscape, water, and community.

The architecture emphasizes:

- Open and adaptable loft layouts
- Strong connection to water, park, and daylight
- Large outdoor living spaces integrated into the façade
- Warm biobased materials and visible timber construction
- A mix of housing types, from garden lofts to duplexes and penthouses
- Shared collective amenities including a communal lounge and landscaped outdoor spaces

The building is conceived as a contemporary wooden landmark where dense apartment living feels spacious, social, and closely connected to nature.

Location: Almere, The Netherlands

Program: 51 highly individualized apartments organized as flexible lofts

Architecture: Marc Koehler Associates

Client: Superlofts together with Casa 23

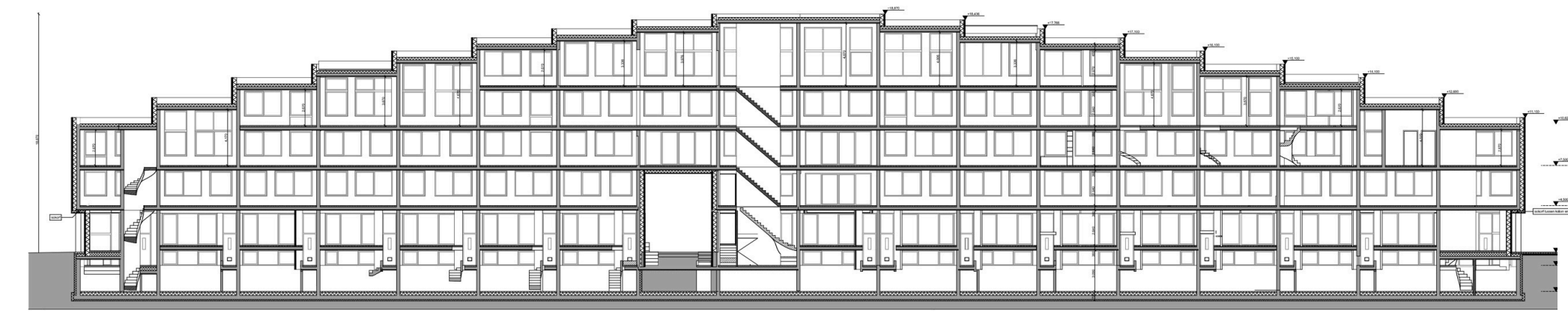
## Building as a land art sculpture

When the Dutch understood the potential of artificial landscapes and architecture as instruments for creating identity, they began to shape the land itself. In the Netherlands, the landscape is not simply natural — it is designed, constructed, and continuously transformed. Projects such as Peak represent this idea of the man-made landscape: a polder reclaimed from water, where architecture and urban planning generate entirely new identities and ways of living.

The Dutch landscape is traditionally defined by its flatness and vast openness. Within this horizontal terrain, even a small hill becomes unique and significant. Historically, people adapted to the constant threat of flooding by living on terpen — artificial mounds built to provide safety during high tides.

A terp for living represents a traditional way of inhabiting the landscape. More than just a practical solution, the terp creates a sense of overview, refuge, and security. Elevated above the flat land, it offers both protection and a different relationship to the surrounding environment, turning topography into a spatial and cultural identity.

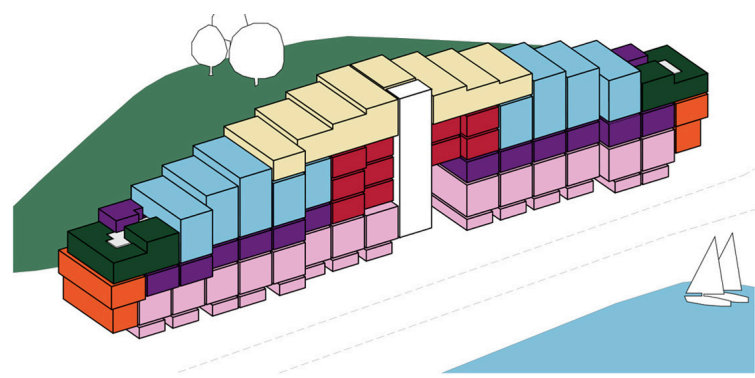




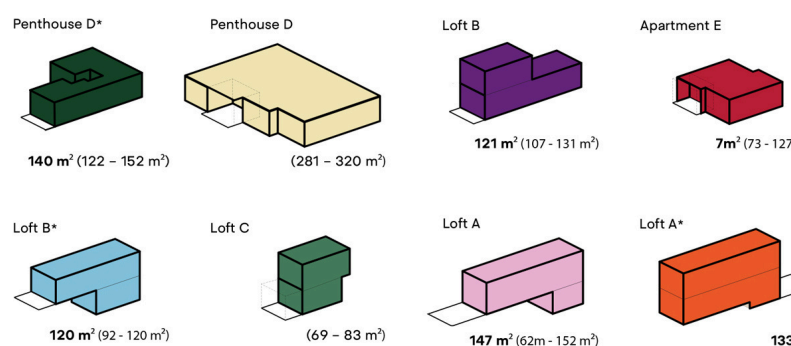
Section



Floorplan



Loft types



The project consists of 51 highly individualized SUPERLOFTS apartments organized as flexible lofts with generous ceiling heights, large panoramic windows, split-level spaces, and deep terraces. Rather than repeating standard floorplans, each home is designed with unique spatial qualities, views, and indoor-outdoor relationships.



Loft axonometry



Plinth



Private terrace



Entrance



**Social hub**  
The project's main communal space functions as a shared social hub — a neighborhood living room designed to bring residents together. Connected to a generous porch beneath the building that extends toward the lake, the space encourages interaction, relaxation, and collective use of the landscape. Shared amenities including storage, a communal kitchen, and meeting rooms support everyday social life, creating a vibrant and inclusive social heart for the building.



Private terrace



Private terrace



Interior apartment

