

Elements Natuurhotel Terschelling

Shaped by wind, sun, and dunes

Elements Terschelling is a luxury nature retreat designed by Marc Koehler Associates with interiors by Hinabaay Interior & Design. Embedded within the dunes of Terschelling, the project is conceived as an architecture of silence, landscape, and sensory experience, where building, interior, and nature merge seamlessly.

The architecture follows the natural topography and is partially sunken into the dunes, reducing visual impact while maximizing panoramic views toward sea, forest, and sky. Large openings, deep terraces, and carefully framed sightlines create a constant dialogue with the landscape. The building's almost brutalist character — expressed through robust concrete volumes and monolithic detailing — is softened by warm natural materials and refined craftsmanship.

The interiors are defined by a sophisticated balance between rough and soft, open and intimate. Raw concrete, warm timber, Belgian linen, local wool, custom furniture, and handcrafted objects create an atmosphere of understated luxury deeply rooted in the island context. Wooden portals subtly integrate technical elements while enhancing spatial calm and intimacy.

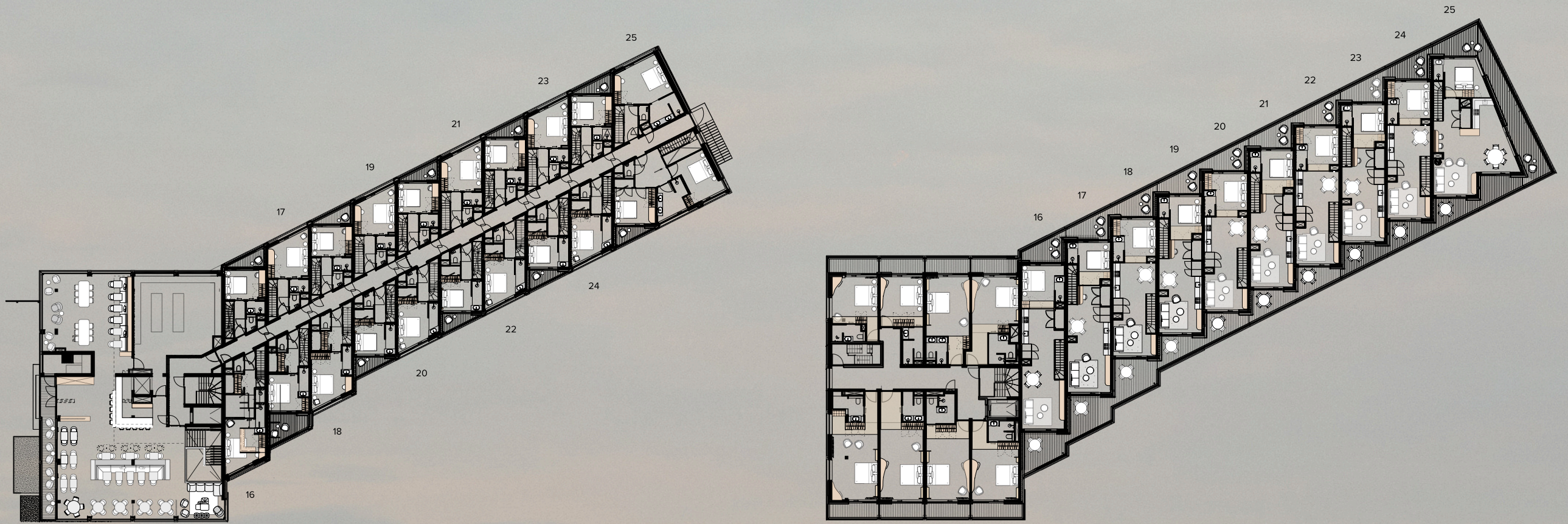
A remarkable quality of Elements lies in its masterfully executed detailing: tactile materials, seamless transitions, bespoke furnishings, integrated lighting, and carefully curated artisanal objects create a timeless and immersive spatial experience. Rather than functioning as a conventional hotel, Elements is conceived as a holistic retreat where architecture, wellness, gastronomy, and nature together create a deeply restorative environment.

Location: Terschelling, The Netherlands

Program: Boutique dune resort and apartment hotel featuring a spa, beach club, and premium hospitality services. Made for outdoor activities such as hiking, surfing, biking, etc.

Architecture: Marc Koehler Associates

Client: Formerum aan Zee BV



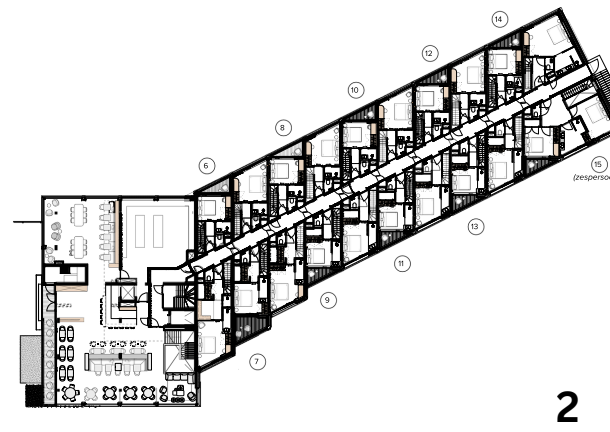
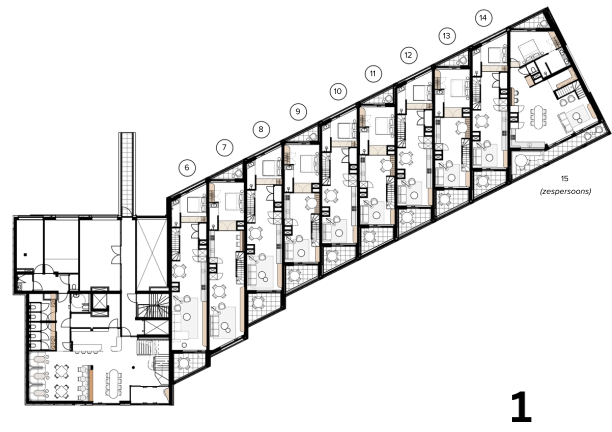
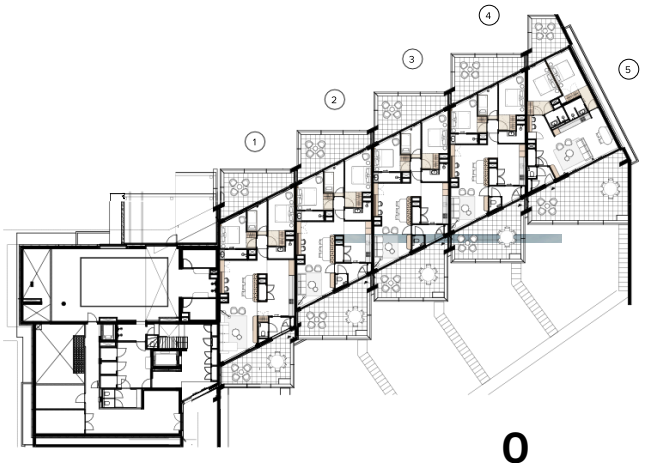
Warm brutalism: Sculptural dune hotel - inspired by Sea Ranch, California, from the 1960s'



Location and context - form follows landscape



Floorplans



Just opened restaurant Dune has already received a Michelin star

Second-floor double-loaded corridor gives access to duplex lofts in Le Corbusier' Unité d'Habitation style. Volumes are rotated by 40 degrees to create a fishbone-like pattern that forms sculptural loggias within the façade. This strategy breaks down the building mass into a more dynamic composition, generates a wavelike silhouette, and provides natural protection from the coastal winds, while maximizing views toward both the sea and the surrounding dunes.



Dune loft



Duplex loft



Panoramic loft



Interior spa in the lower floor, sunken into the dunes

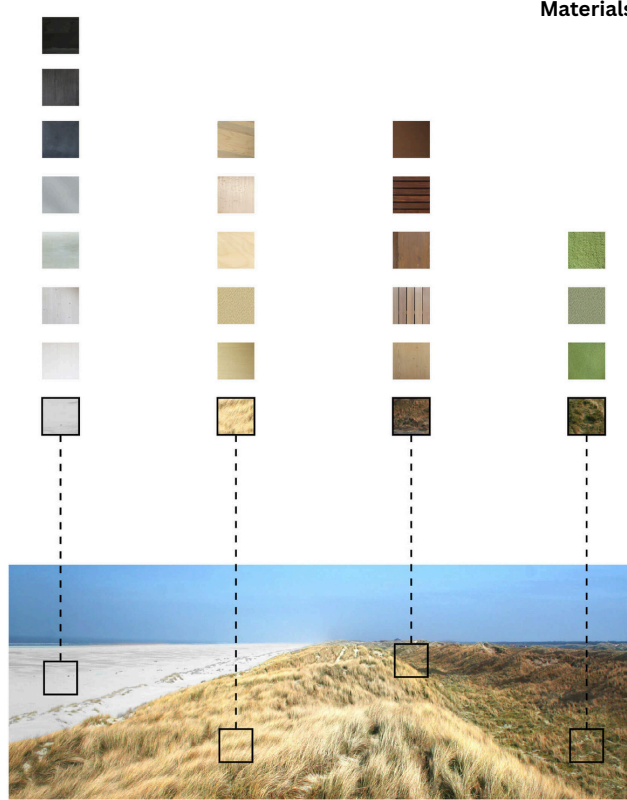


Sunset facade

Conceived as a tactile landscape, the project uses sensory natural materials, reinforcing the architecture's relationship with its environment using timber, concrete, terraco, microcement, glass, and aluminium. Inspired by the island's textures, tones, and atmosphere, this muted palette enhances the experience of barefoot luxury, creating spaces that feel natural, immersive, and intimately connected to the landscape.

Materials are chosen for their robust properties, aging beautifully in the sand and salt storms of the North Sea. Over time, they develop a natural patina shaped by the elements, where weathering and imperfections become an expression of beauty.

This natural palette extends into the interior, where it is balanced by soft, organic surfaces. The fixed furniture is kept low to preserve and guide the views, emphasizing the strong horizontal line of the landscape.



Materials



Facade



Shaped by the forces of nature wind, dune, sand and grass



Facade details



Facade