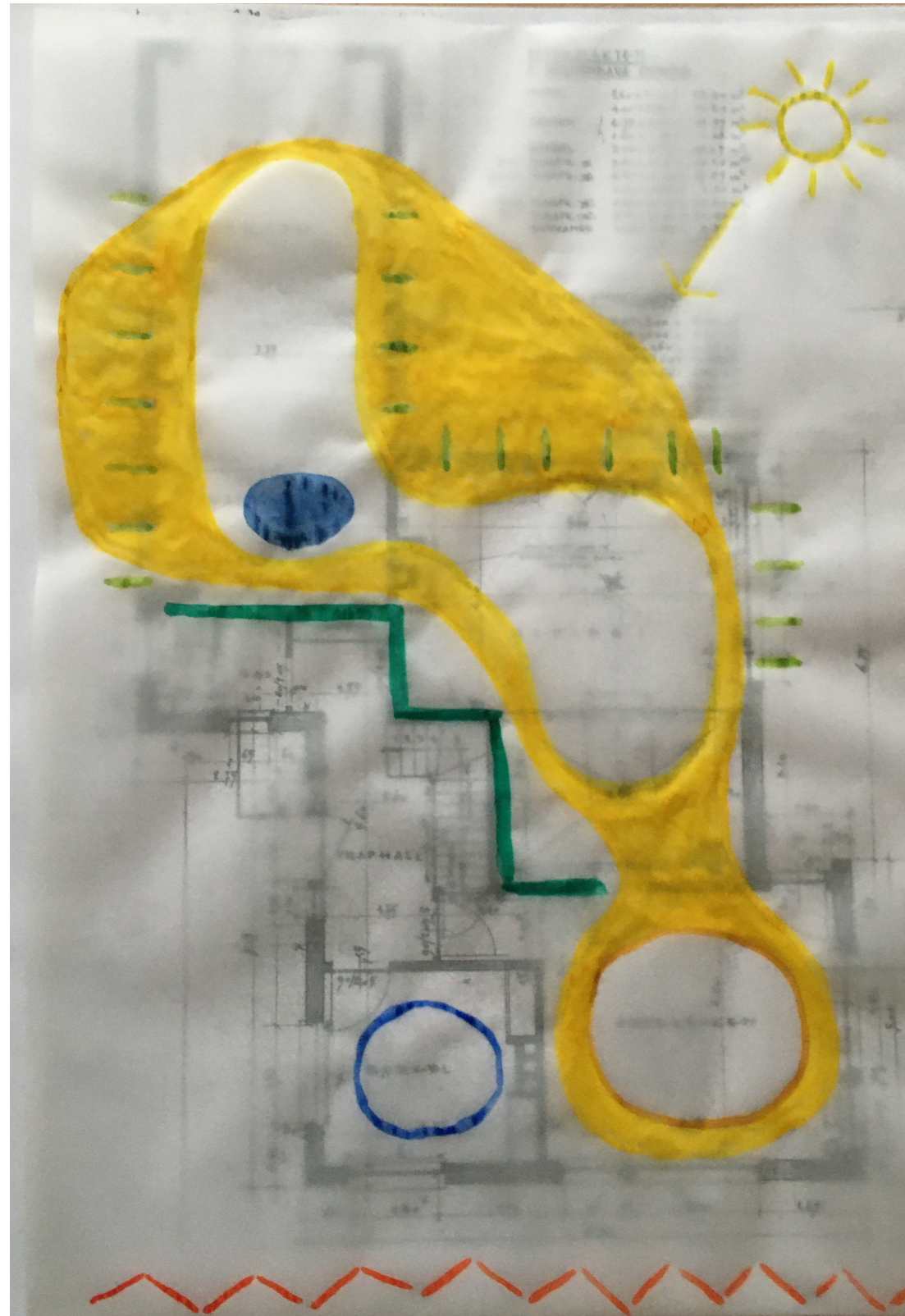


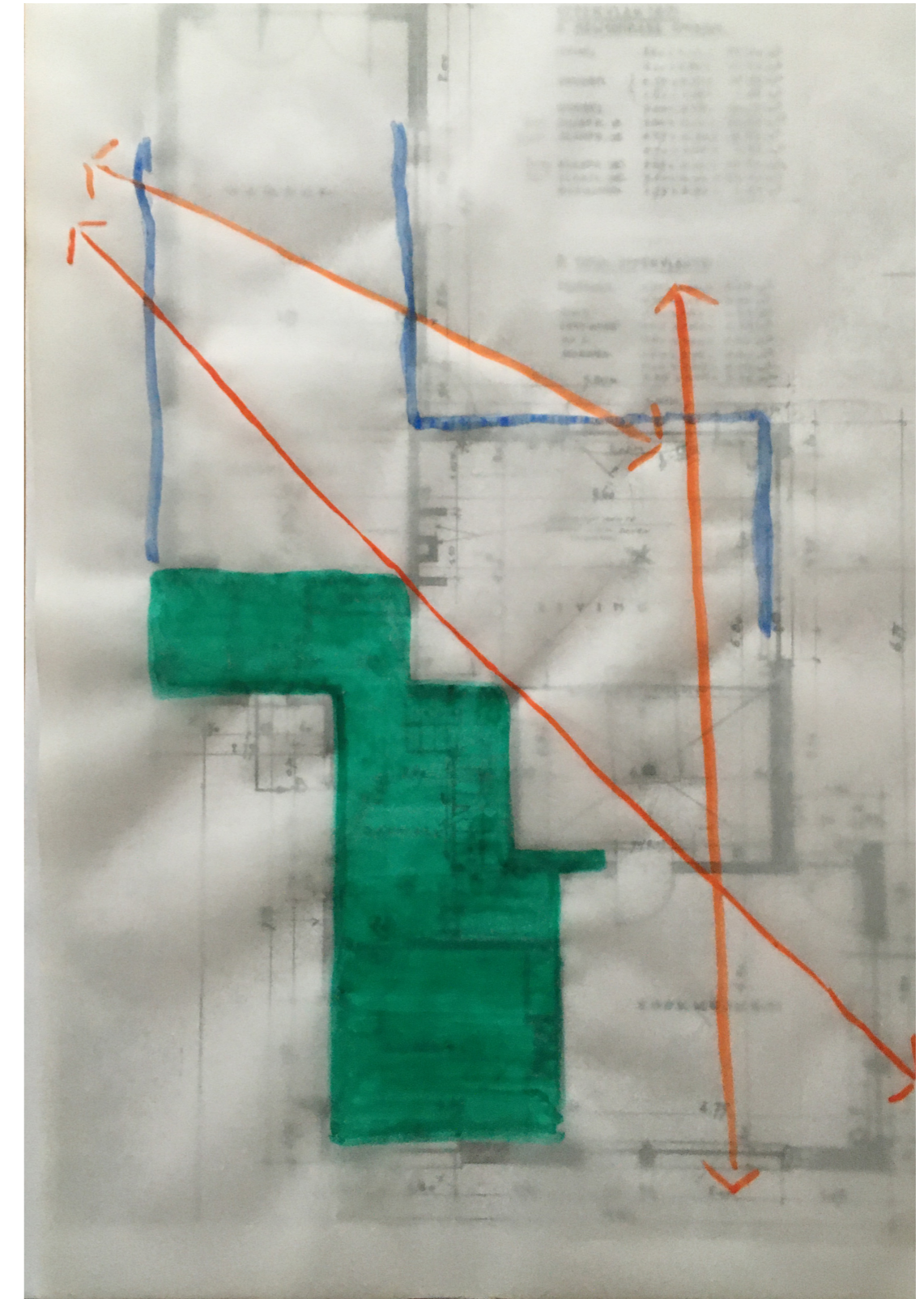
# schemes



living spaces are connected & facing the sun & the garden





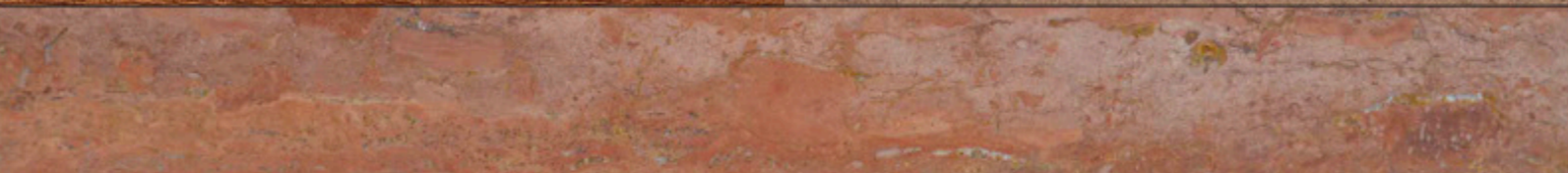

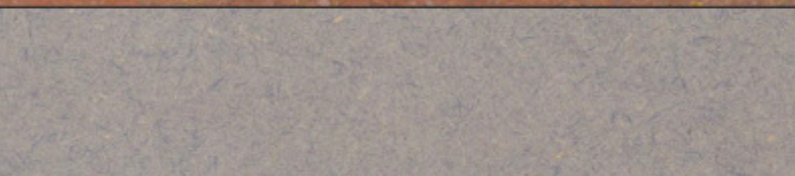
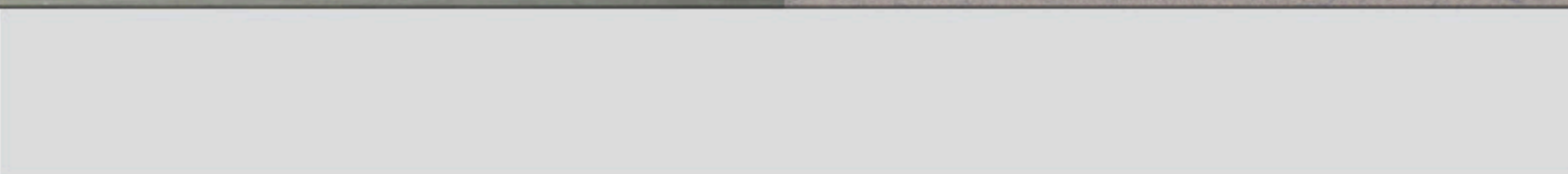
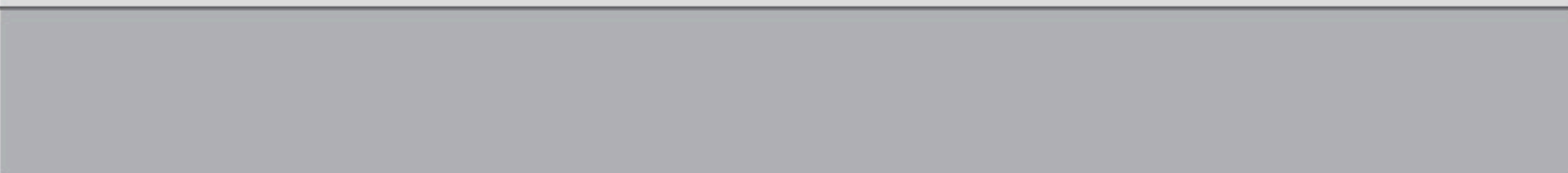


specific areas and spaciousness

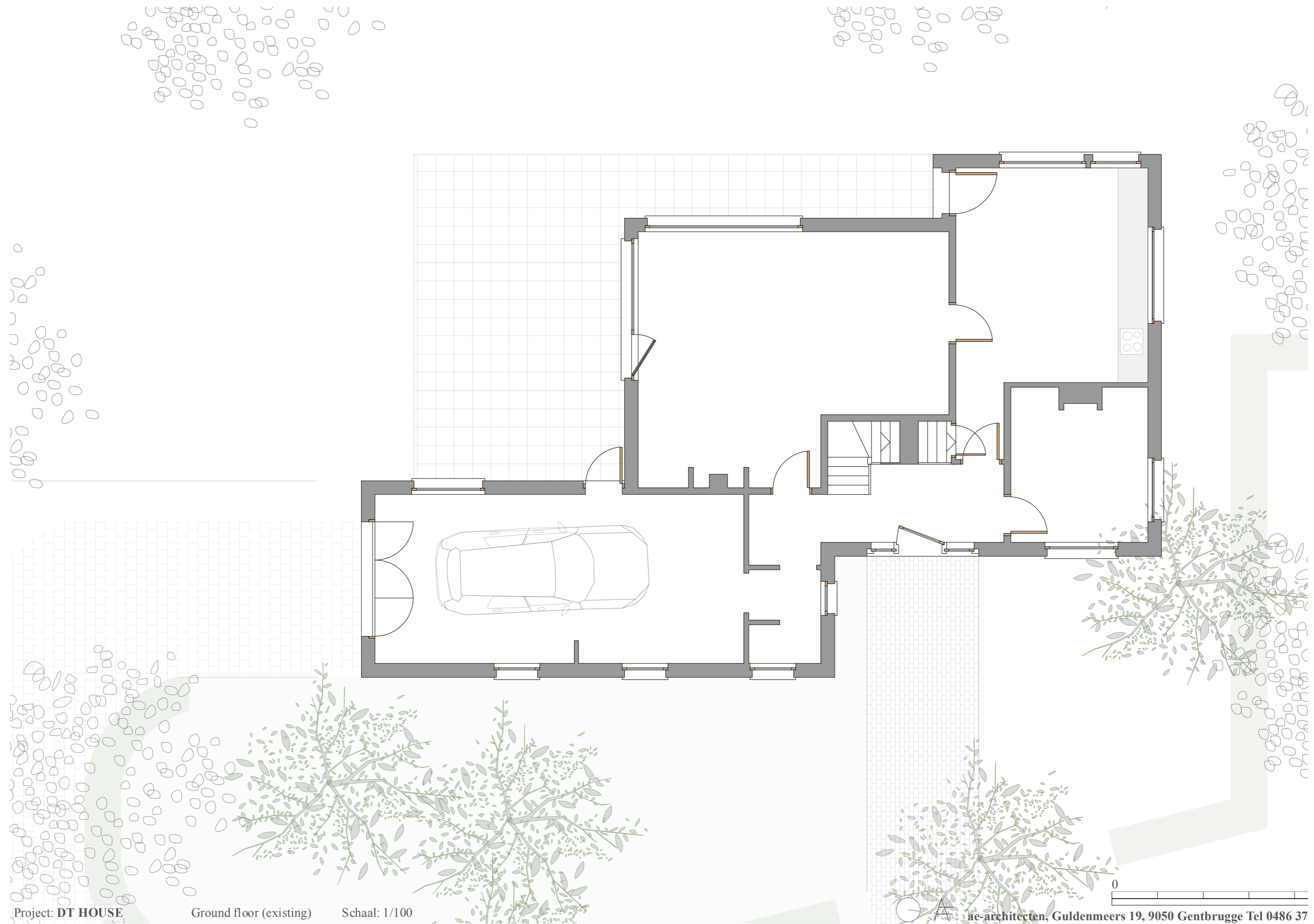


\*Served Spaces  
with new relationships:  
-diagonal  
-Inside outside inside  
\*Servant Spaces as buffer

# color scheme

Poutrelle		
Vloer bureau/bib		
Fronten "Sapeli Hout"	 	Korpus "Valchromat Bruin"
Werkblad keuken "Travertin rouge d'Iran"		
Eiland "Verde Oasis"	 	Eiland fronten+ korpus "Valchromat lichtgrijs"
Buitenschrijnwerk "Nardo Grey" cfr. Audi, BMW		
Redocrete tint donkerder dan schrijnwerk		

existing plan 0



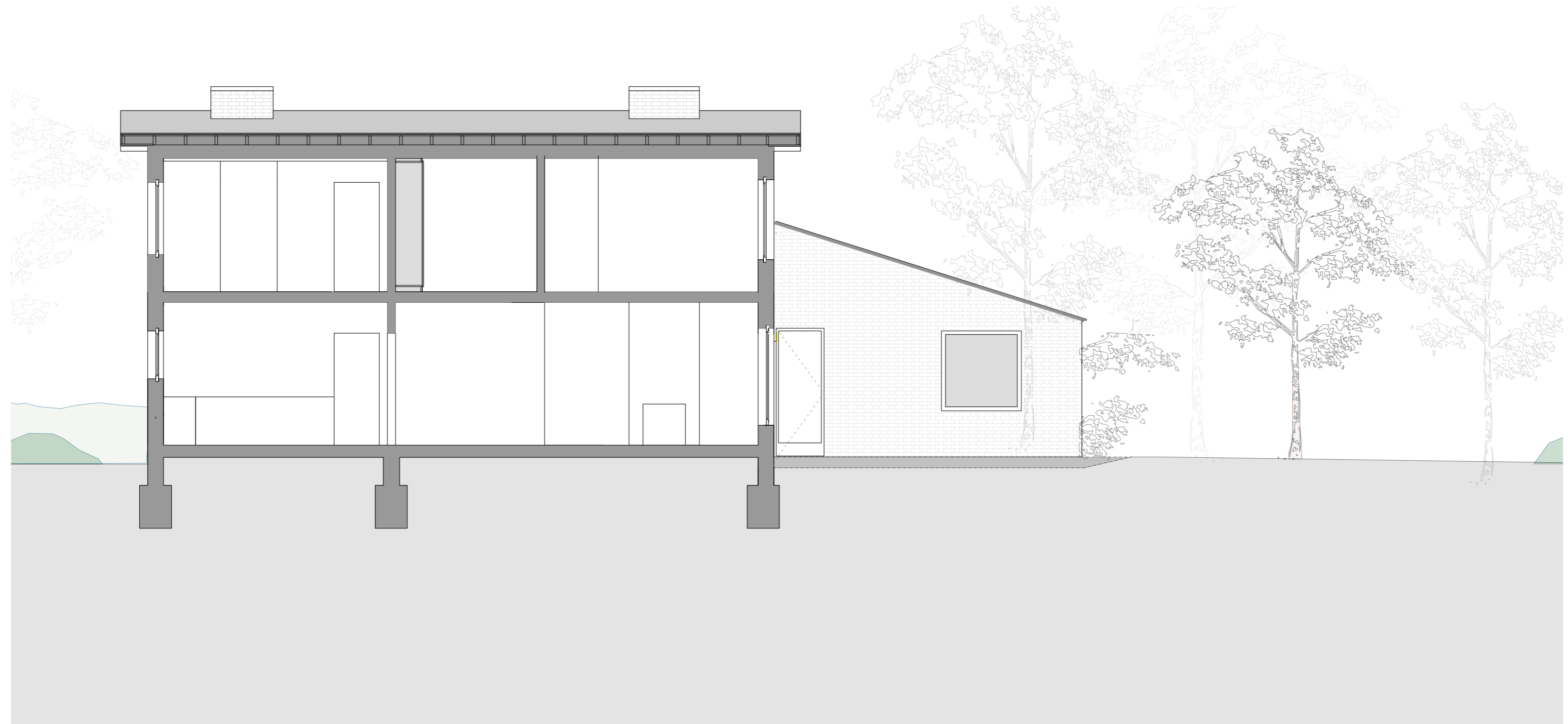
Project: **DT HOUSE**

Ground floor (existing)

Schaal: 1/100

ae-architecten, Guldenmeers 19, 9050 Gentbrugge Tel 0486 37

old section



shelter

