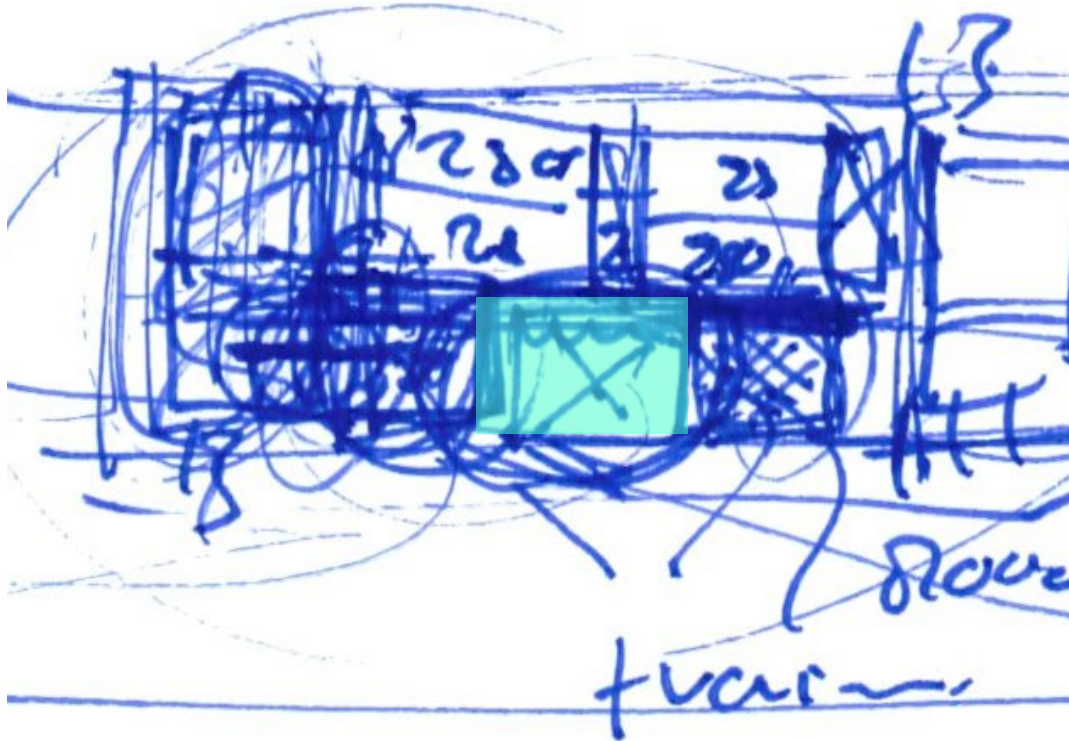


MAIN CONCEPT



demonstration field in the center of HQ



Altes Museum Berlin 1828, Karl Friedrich Schinkel



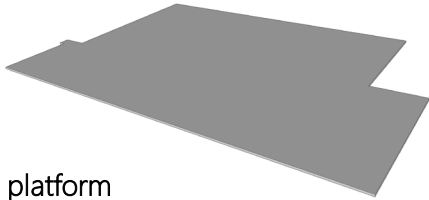
Cityhal Logroño 1981, Rafael Moneo



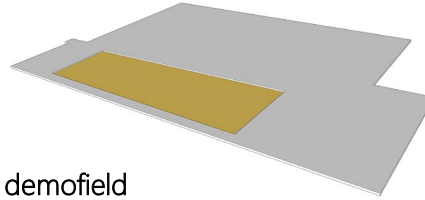
Santa Croce Chiostro Grande Florence 1445 , Filippo Brunelleschi



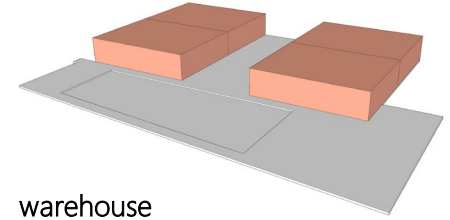
Casino Glienicke 1824, Karl Friedrich Schinkel



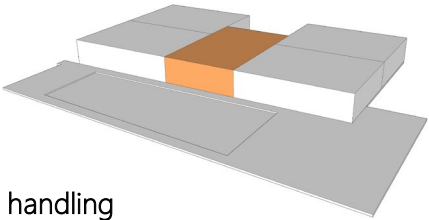
platform



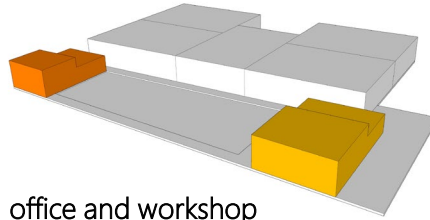
demofield



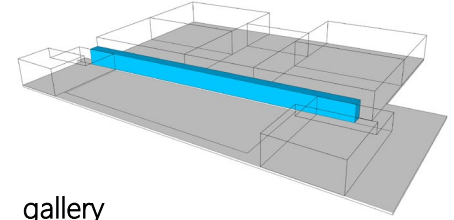
warehouse



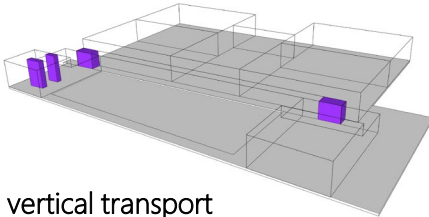
handling



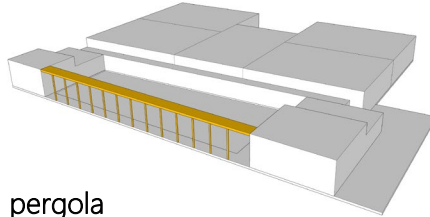
office and workshop



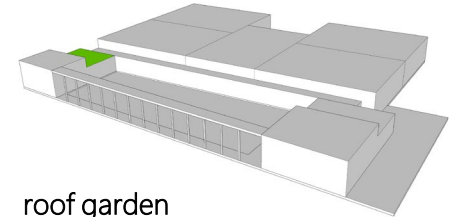
gallery



vertical transport



pergola



roof garden

program organisation



july 2025

EBBENS ARCHITECTEN



Kobelco Pergola 100 m long 13 m high



Kobelco connection between buildings



Kobelco gallery



Demonstration field as the center of the complex