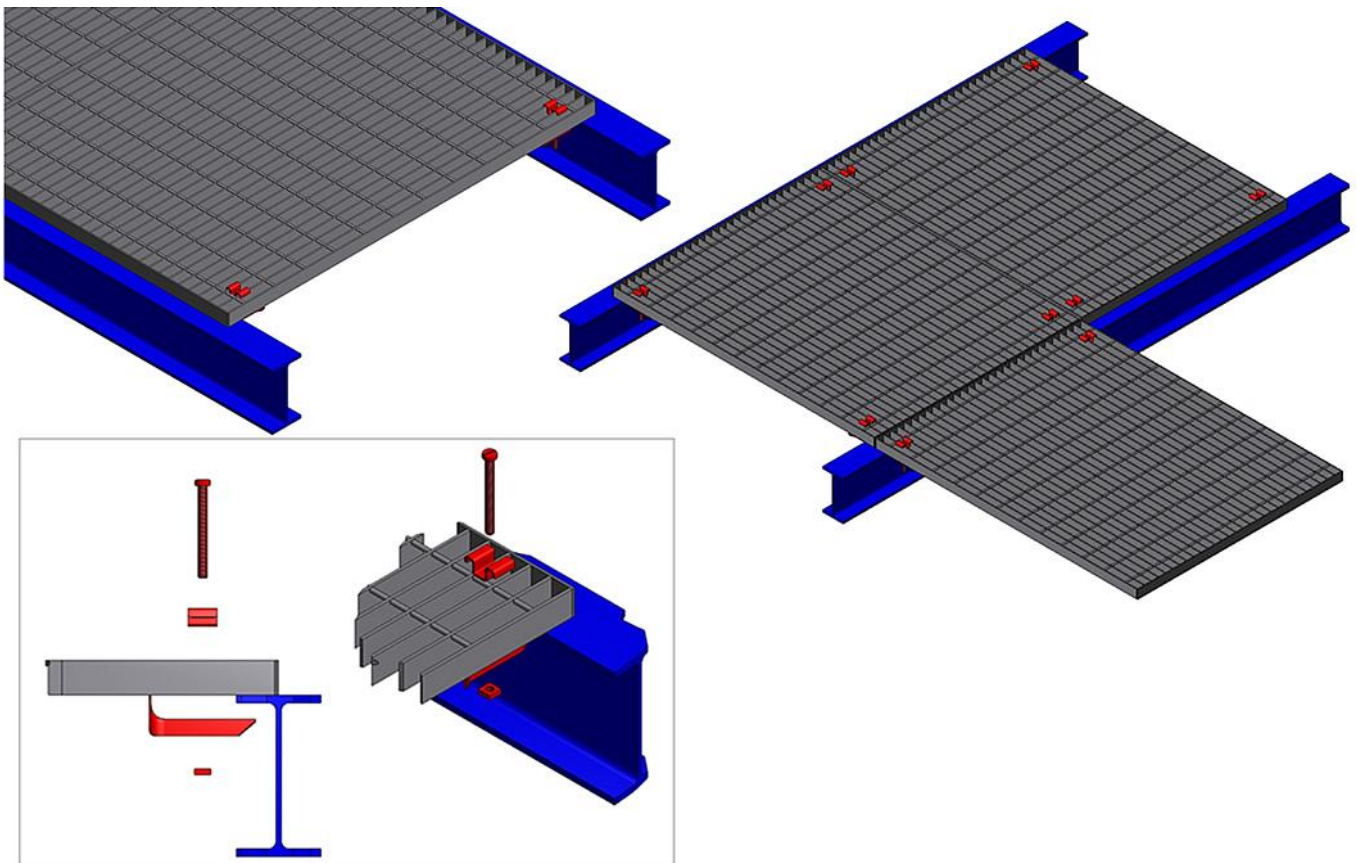
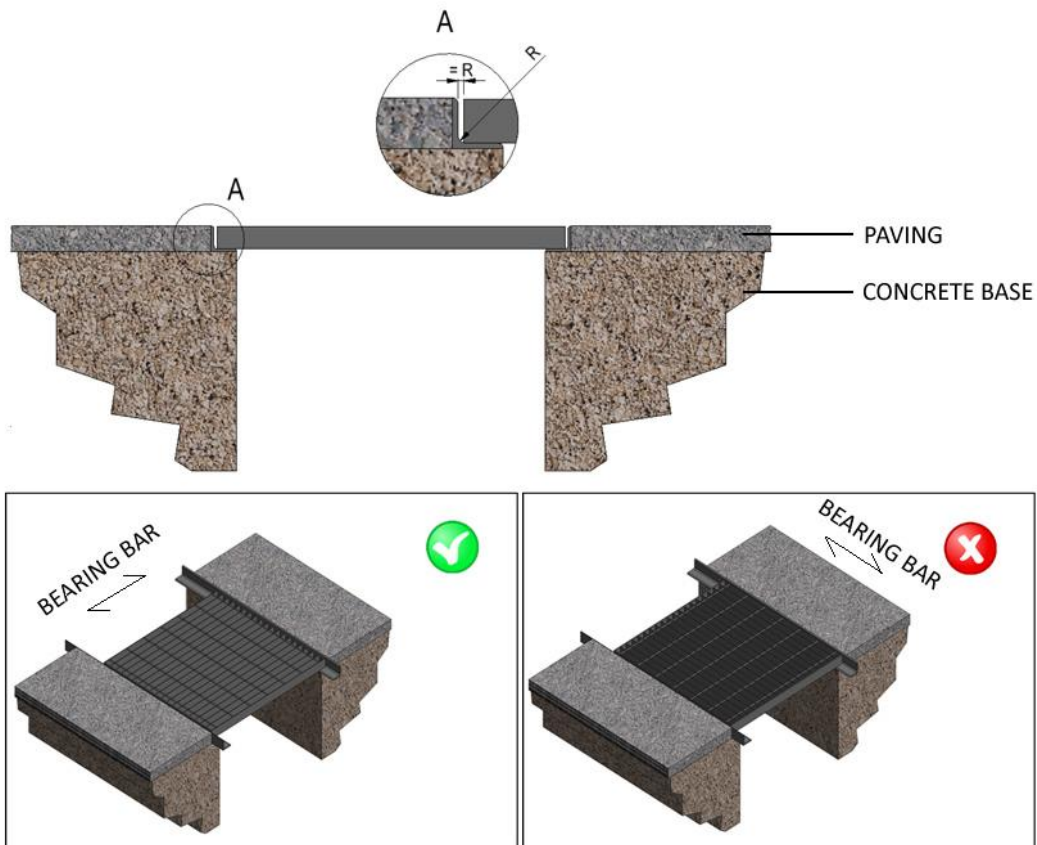


## USE AND MAINTENANCE

Reference	Type	Description
5371	Standard Grids	STANDARD pressure locked grating, bearing bar 25x2, transverse bar 10x2, mesh 55x11 (heelguard), c/w L shaped frame 30x20x2, hot-dip galvanized, light vehicles loading class.

## INSTALLATION





**INSTRUCTION:**

Installation must be carried out by expert personnel equipped with suitable equipment for lifting heavy loads.

If the grating weighs 30 kg or less, it can be moved by hand, though the assistance of two operators is recommended.

**PAVING WITH GRATING ON A FRAMEWORK STRUCTURE**

- 1 - Make sure that the installation surface is intact and capable of withstanding the load to be applied on it.
- 2 - Lay the grating so that the bearing bars cover the distance between the supporting elements and make sure that the support base is not lower than 2/3 the height of the plates and exceeds 20 mm.
- 3 - Lay adjacent to or behind the first grating all the other gratings forming the paving, making sure that they lie at least 2 mm apart and that the bearing and connecting plates are all aligned to one another.
- 4 - Once the gratings have been arranged on the surface, they must be fastened to the framework using the grating fasteners with screws. Four (4) grating fasteners for each grating or per square metre of grating.

**GRATINGS WITH FRAME ON CEMENTITIOUS PAVING**

- 1 - Make sure that the installation surface is intact and capable of withstanding the load to be applied on it.
- 2 - Extract the grating from the frame and place it over the hole to be covered.
- 3 - Lay the frame so that the sides of the base rest fully over the cement surface.
- 4 - Cut wooden slats to fit the inner dimensions of the frame and insert them across the latter to prevent it from deforming while the concrete sets.
- 5 - Fill the sides with concrete, while also covering the flat tangs welded along the frame perimeter, up to the top of the frame.
- 6 - Once the concrete dries, remove the wooden slats and insert the grating.
- 7 - If any window well lies along the building's wall, place the side of the frame with the vertical tangs against the wall and fasten the tangs with anchor bolts.

## **WARNINGS**

- Strictly observe all the manufacturer's instructions described in this document.
- Do not use the product in ways other than those for which it was intended.
- Do not in any way tamper with the grating or any other component.
- Make sure that the grating has no structural defects; if it does, immediately notify the supplier.
- Make sure that the type of grating matches that requested by the designer.

### **GALVANISED AND/OR COATED STEEL**

- It is important to verify the characteristics of the adhesives used for the paving around the grating, in particular that their pH value falls between 6 and 11.
- Use quick-setting adhesives, or adhesives that dry fully within 7 days.
- Be very careful not to damage the surface treatment of the grating or any other components.
- Do not use aggressive cleaning products, in particular check that their pH value falls between 6 and 11.
- Do not join components made of different metals (e.g. galvanised steel with stainless steel), as this combination in damp environments may lead to corrosion. If the above materials must be used, it is advisable to place an insulating layer between them.

## **MAINTENANCE**

The condition of the grating and its fastenings should be inspected frequently in highly trafficked areas.

## **DISPOSAL**

Regarding disposal, consult the applicable regulations for recovering any materials compatibly with the environment, and observe all local regulations.

Moreover, we recommend contacting a specialised waste disposal company.