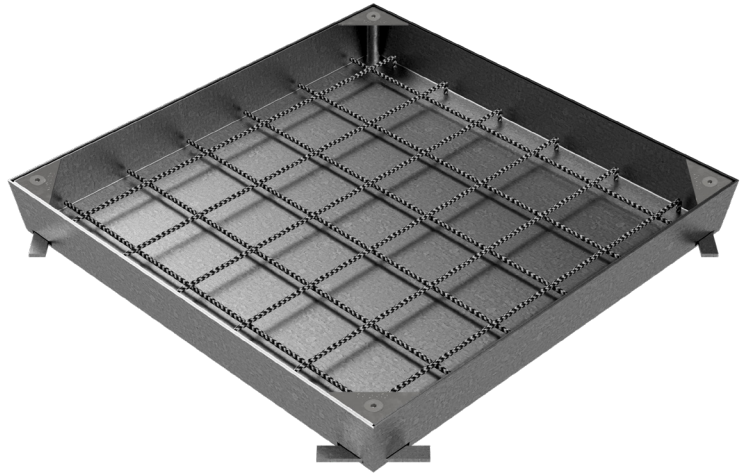
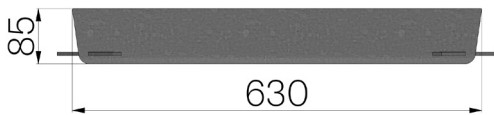


## TECHNICAL SHEET

<b>CODE</b>	7103
<b>DESCRIPTION</b>	KEY recessed manhole, in pickled metal sheet th. 20/10, suitable for interlocking bricks and porphyry stone, watertight seal with O-RING, frame system with stainless steel accessories, antilocking nozzles and lifting handles. Hot-dip galvanized.
<b>PRODUCT LINE</b>	Galvanized manhole covers
<b>MATERIAL</b>	Carbon Steel S235JR acc. to EN 10025-2:2019
<b>SURFACE FINISH</b>	Hot Dip Galvanizing - EN ISO 1461:2022
<b>LOADING CLASS</b>	B125 - EN 124-1:2015
<b>LIFTING SYSTEM</b>	Double screw handle



Nominal sizes mm	Clear opening measures mm	Recessed cover thickness mm	Frame thickness mm	Weight Kg/each
630 x 630 x H 85	490 x 490	2	2	17,62