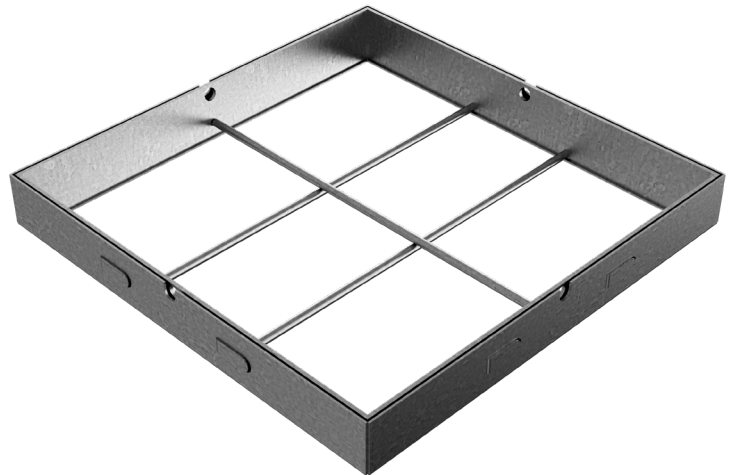


TECHNICAL SHEET

CODE	7073
DESCRIPTION	SLIM for filling manhole, in pickled metal sheet th. 35/10, without bottom, with rod iron, c/w frame in metal sheet th. 20/10 and with side holes for lifting. Finishing: hot-dip galvanized.
PRODUCT LINE	Galvanized manhole covers
MATERIAL	Carbon Steel S235JR acc. to EN 10025-2:2019
SURFACE FINISH	Hot Dip Galvanizing - UNI 1461
LOADING CLASS	To define according to the filling
LIFTING SYSTEM	Hook



Nominal sizes mm	Clear opening measures mm	Recessed cover thickness mm	Frame thickness mm	Weight Kg/each
440 x 440 x H 55	400 x 400	3,5	2	4,98