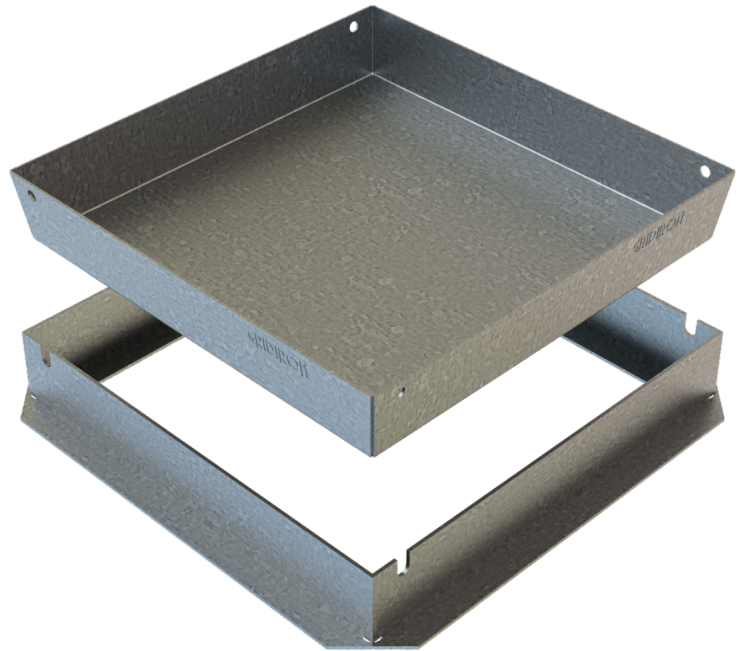
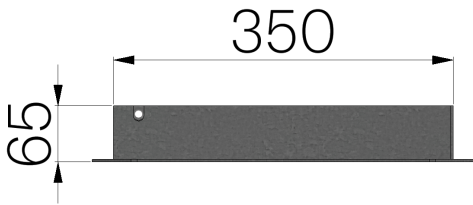


TECHNICAL SHEET

CODE	5862
DESCRIPTION	HARD recessed manhole, in pickled metal sheet th. 20/10, suitable for interlocking bricks and porphyry stones, c/w T frame th. 30/10 and side holes for lifting. Hot-dip galvanized.
PRODUCT LINE	Galvanized manhole covers
MATERIAL	Carbon Steel S235JR acc. to EN 10025-2:2019
SURFACE FINISH	Hot Dip Galvanizing - UNI 1461
LOADING CLASS	To define according to the filling
LIFTING SYSTEM	Hook



Nominal sizes mm	Clear opening measures mm	Recessed cover thickness mm	Frame thickness mm	Weight Kg/each
350 x 350 x H 65	290 x 290	2	3	6,6