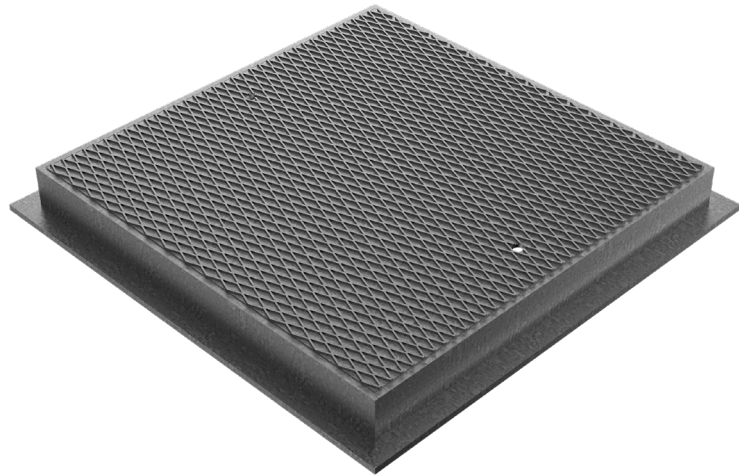


TECHNICAL SHEET

CODE	5604
DESCRIPTION	Plate mod. E in chequered metal sheet 8+2 reinforced with transverse bars, hot-dip galvanized, c/w T profile frame, tractor-trailer loading class.
PRODUCT LINE	Professional Plates
MATERIAL	S235JR steel - EN 10025-2:2019
SURFACE FINISH	Hot Dip Galvanizing - UNI 1461
BOTTOM REINFORCEMENT	Equal flats
REACTION TO FIRE	Class A1 according to standard EN 13501-1
LOADING CLASS	D400 - EN 124-1:2015



Article dimensions mm	Clear opening measures mm	Weight Kg/each
700 x 1340 x H70	560x1200	127,5