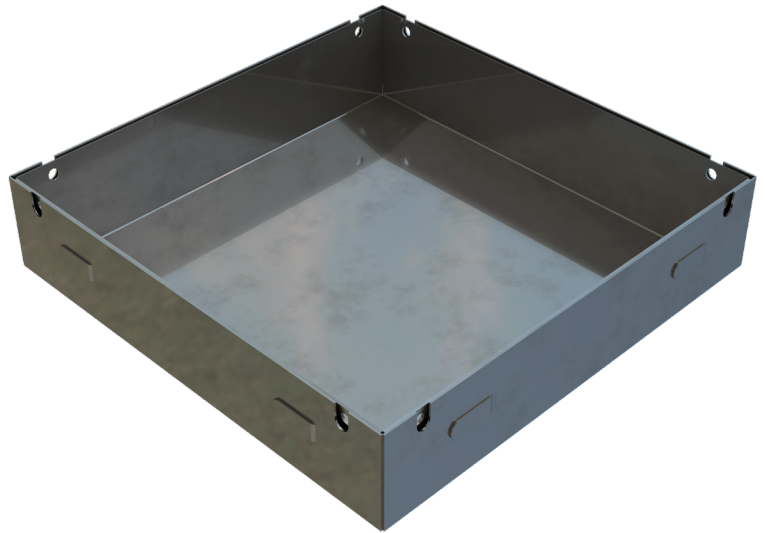


TECHNICAL SHEET

CODE	5592
DESCRIPTION	PESANTE recessed manhole, in pickled metal sheet th. 20/10, suitable for interlocking bricks and porphyry stones; c/w frame and side holes for lifting. Hot-dip galvanized
PRODUCT LINE	Galvanized manhole covers
MATERIAL	Carbon Steel S235JR acc. to EN 10025-2:2019
SURFACE FINISH	Hot Dip Galvanizing - UNI 1461
LOADING CLASS	To define according to the filling
LIFTING SYSTEM	Hook



Nominal sizes mm	Clear opening measures mm	Recessed cover thickness mm	Frame thickness mm	Weight Kg/each
300 x 300 x H 85	250 x 250	2	2	4,94