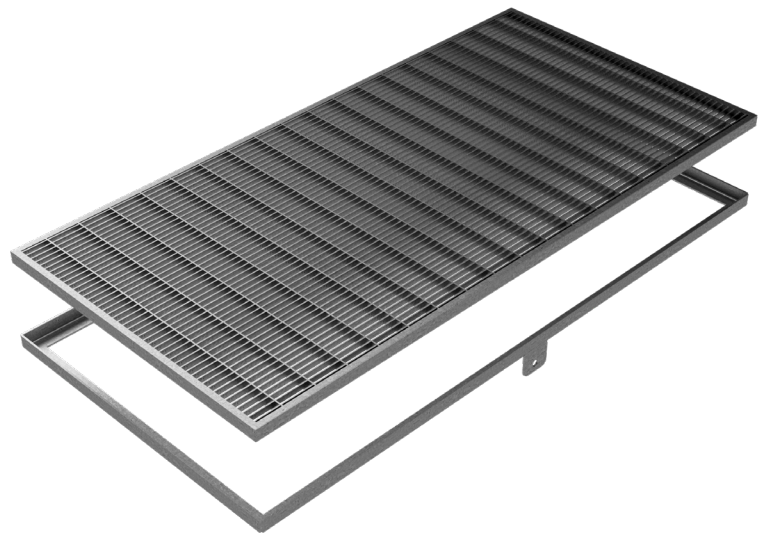


TECHNICAL SHEET



CODE	5365
DESCRIPTION	STANDARD press-folded grating, bearing bar 20x2, transverse bar 10x2, mesh 55x11 (heelguard), for basement window well, c/w angular wall frame 25x3, hot-dip galvanized. Pedestrians loading class.
MATERIAL	Carbon Steel S235JR acc. to EN 10025-2:2019
SURFACE FINISH	Hot Dip Galvanizing - UNI 1461



Article dimensions mm	Carrier plate	Links	Mesh	Weight Kg/each
630 x 1210 x H 25	Flat bar 20x2	Bar 10x2	55x11	18,02