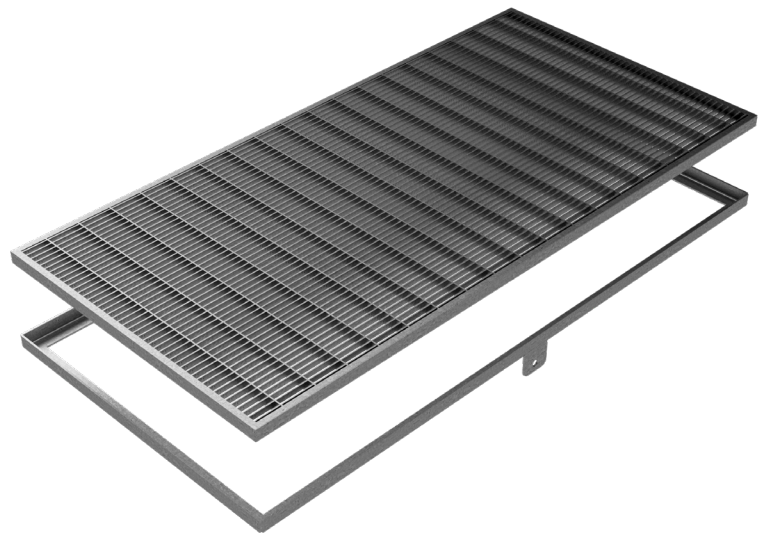


# TECHNICAL SHEET



<b>CODE</b>	5325
<b>DESCRIPTION</b>	STANDARD press-folded grating, bearing bar 20x2, transverse bar 10x2, mesh 55x11 (heelguard), for basement window well, c/w angular wall frame 25x3, hot-dip galvanized. Pedestrians loading class.
<b>MATERIAL</b>	Carbon Steel S235JR acc. to EN 10025-2:2019
<b>SURFACE FINISH</b>	Hot Dip Galvanizing - UNI 1461



Article dimensions mm	Carrier plate	Links	Mesh	Weight Kg/each
630 x 1760 x H 25	Flat bar 20x2	Bar 10x2	55x11	25,6