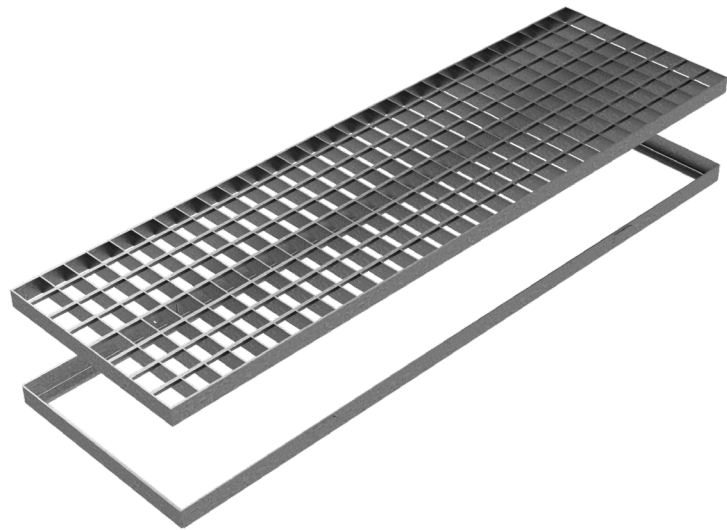
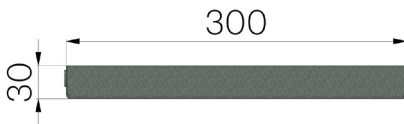


TECHNICAL SHEET



ASSEMBLED CODE	5266
DESCRIPTION	WALKY electro-forgewelded grating, bearing bar 25x2, mesh 34x48, c/w L profiled frame 30x20x2, hot-dip galvanized.
PRODUCT LINE	Standard forge-welded grating
STANDARD	EN 1090-1:2009 + A1:2011
FIRE RESISTANCE	Class A1 according to standard EN 13501-1
LOADING CLASS	CL. 2 – Loading capacity car - UNI 11002-1:2009
INTENDED USE OR USES OF THE PRODUCT	Structural carbon steel grating where vehicular and/or pedestrian traffic is foreseen.
DURABILITY	Galvanized surface as per standard EN ISO 1461. Galvanizing durability according to EN ISO 14713.



Article dimensions mm	Clear opening measures mm	Weight Kg/each
100 x 500 x H 30	60 x 460	1,98