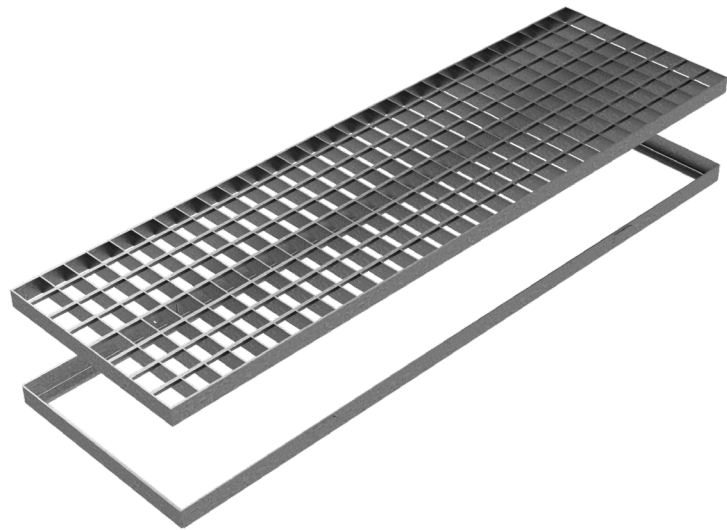
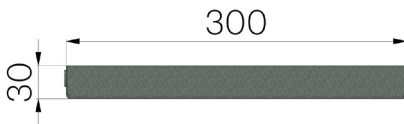


# TECHNICAL SHEET



<b>ASSEMBLED CODE</b>	5262
<b>DESCRIPTION</b>	WALKY electro-forgewelded grating, bearing bar 25x2, mesh 34x48, c/w L profiled frame 30x20x2, hot-dip galvanized.
<b>PRODUCT LINE</b>	Standard forge-welded grating
<b>STANDARD</b>	EN 1090-1:2009 + A1:2011
<b>FIRE RESISTANCE</b>	Class A1 according to standard EN 13501-1
<b>LOADING CLASS</b>	CL. 2 – Loading capacity car - UNI 11002-1:2009
<b>INTENDED USE OR USES OF THE PRODUCT</b>	Structural carbon steel grating where vehicular and/or pedestrian traffic is foreseen.
<b>DURABILITY</b>	Galvanized surface as per standard EN ISO 1461. Galvanizing durability according to EN ISO 14713.



Article dimensions mm	Clear opening measures mm	Weight Kg/each
200 x 500 x H 30	160 x 460	2,96