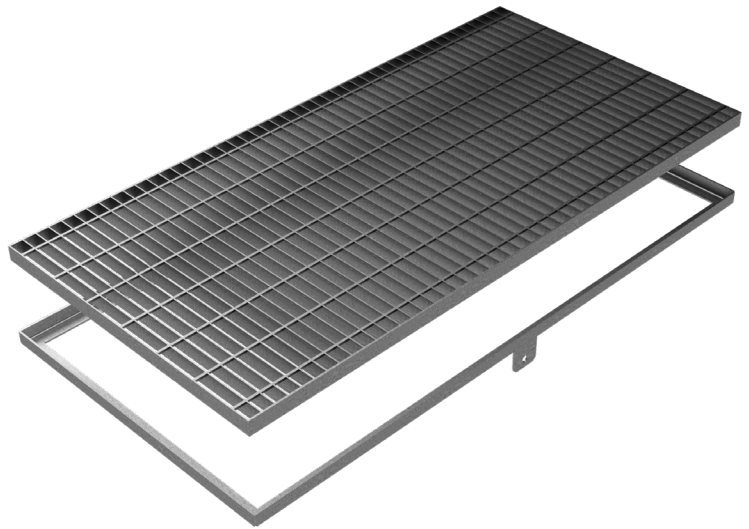
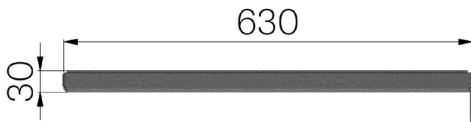


## TECHNICAL SHEET

<b>CODE</b>	5208
<b>DESCRIPTION</b>	STANDARD electro-forgewelded grating, bearing bar 25x2, mesh 22x76, c/w angular wall frame 30x3, hot-dip galvanized, pedestrians loading class.
<b>MATERIAL</b>	Carbon Steel S235JR acc. to EN 10025-2:2019
<b>SURFACE FINISH</b>	Hot Dip Galvanizing - UNI 1461



Article dimensions mm	Bearing bar	Transverse bar	Mesh	Weight Kg/each
630 x 1360 x H 30	Flat bar 25x2	Twisted framework from 4,5	22x76	23,98