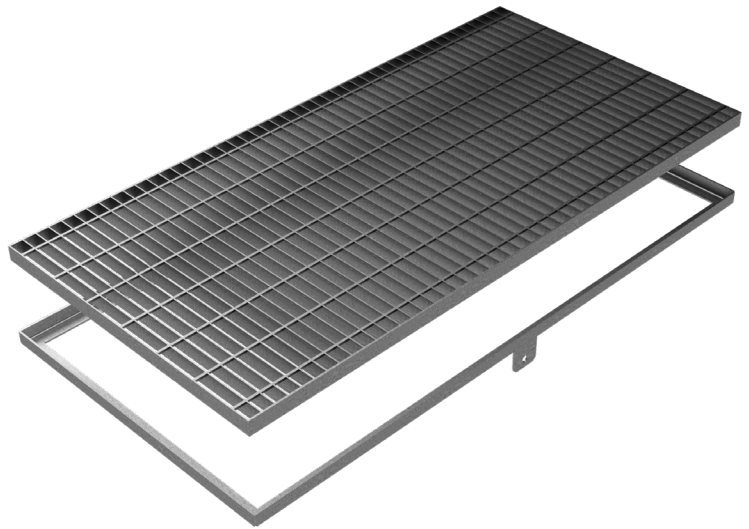
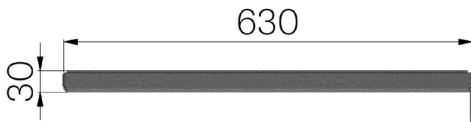


TECHNICAL SHEET

CODE	5204
DESCRIPTION	STANDARD electro-forgewelded grating, bearing bar 25x2, mesh 22x76, c/w angular wall frame 30x3, hot-dip galvanized, pedestrians loading class.
MATERIAL	Carbon Steel S235JR acc. to EN 10025-2:2019
SURFACE FINISH	Hot Dip Galvanizing - UNI 1461



Article dimensions mm	Clear opening measures mm	Carrier plate	Links	Mesh	Weight Kg/each
630 x 1060 x H 30	600 x 1000	Flat bar 25x2	Twisted framework from 4,5	22x76	19,62