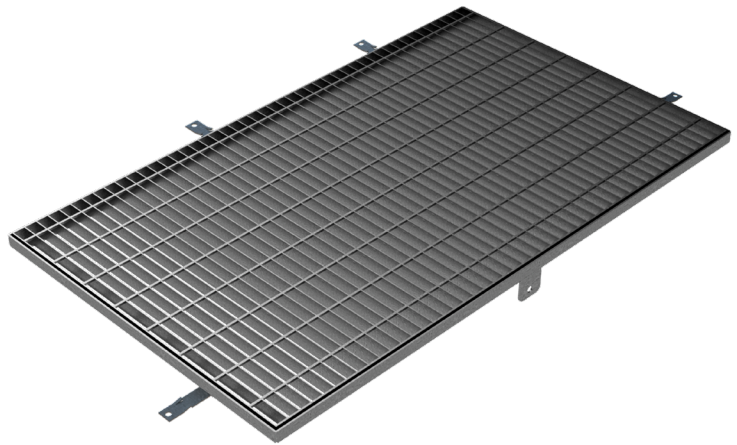
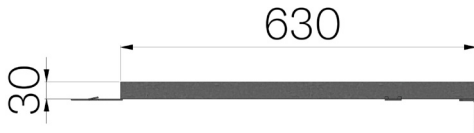


TECHNICAL SHEET

CODE	5204FM
DESCRIPTION	STANDARD electro-forgewelded grating, bearing bar 25x2, mesh 22x76, suitable for basement window wells, fixed to the wall, hot-dip galvanized, pedestrians loading class.
MATERIAL	Carbon Steel S235JR acc. to EN 10025-2:2019
SURFACE FINISH	Hot Dip Galvanizing - UNI 1461



Article dimensions mm	Carrier plate	Links	Mesh	Weight Kg/each
630 x 1060 x H 30	Flat bar 25x2	Twisted framework from 4,5	22x76	17,08