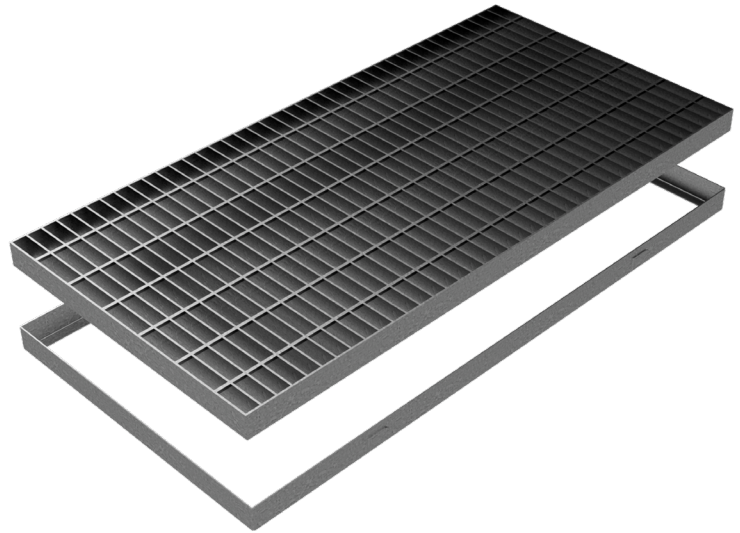
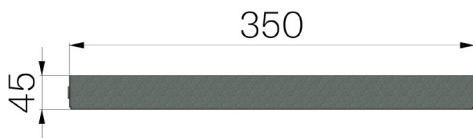


TECHNICAL SHEET

CODE	5074
DESCRIPTION	Practicable STANDARD electro-forgewelded grating, bearing bar 40x3, mesh 25x76, c/w L shaped frame 43x20x2, hot-dip galvanized, light trucks loading class.
PRODUCT LINE	Standard forge-welded grating
MATERIAL	Carbon Steel S235JR acc. to EN 10025-2:2019
SURFACE FINISH	Hot Dip Galvanizing - UNI 1461



Carrier plate	Links	Mesh	Weight Kg/each
Flat bar 40x3	Twisted framework from 5	25x76	17,6