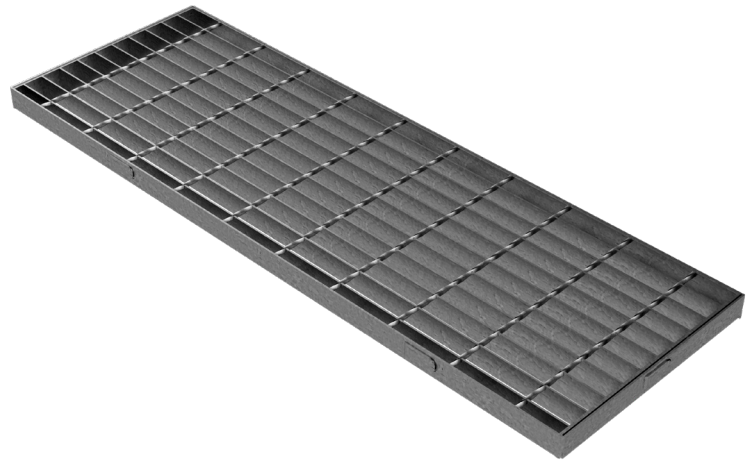
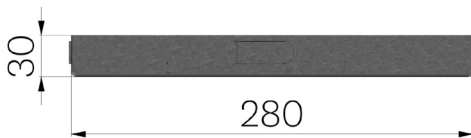


TECHNICAL SHEET

CODE	5043N
DESCRIPTION	STANDARD electro-forgewelded grating, bearing bar 25x2, mesh 25x76, c/w L profiled frame 30x20x2, hot-dip galvanized, Light vehicles loading class.
PRODUCT LINE	Standard forge-welded grating
MATERIAL	Carbon Steel S235JR acc. to EN 10025-2:2019
SURFACE FINISH	Hot Dip Galvanizing - UNI 1461



Carrier plate	Links	Mesh	Weight Kg/each
Flat bar 25x2	Twisted framework from 4,5	25x76	5,96