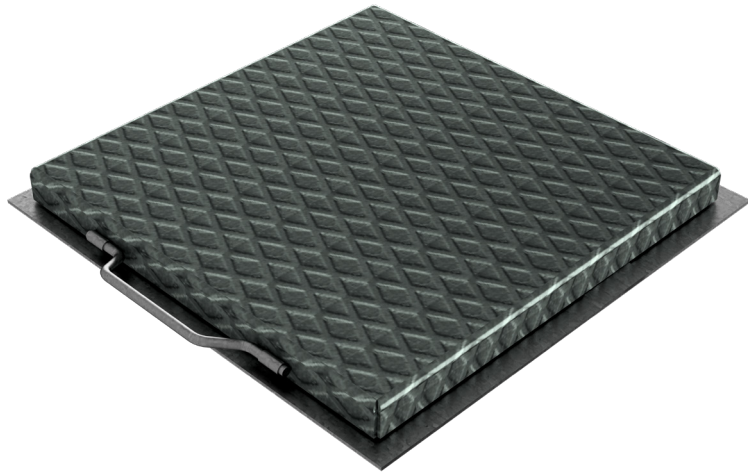


TECHNICAL SHEET

ASSEMBLED CODE	5029
DESCRIPTION	CISTERNA manhole cover in embossed metal sheet 30/10, hot-dip galvanized, c/w angular frame 35x3, with hinges and handle, set-up for locking.
PRODUCT LINE	Cisterna manhole covers
FIRE RESISTANCE	Class A1 according to standard EN 13501-1
LOADING CLASS	CL. 1 – Dense crowd UNI 11002-1:2009



Article dimensions mm	Clear opening measures mm	Weight Kg/each
830 x 830 x H35	760 x 760	23,82