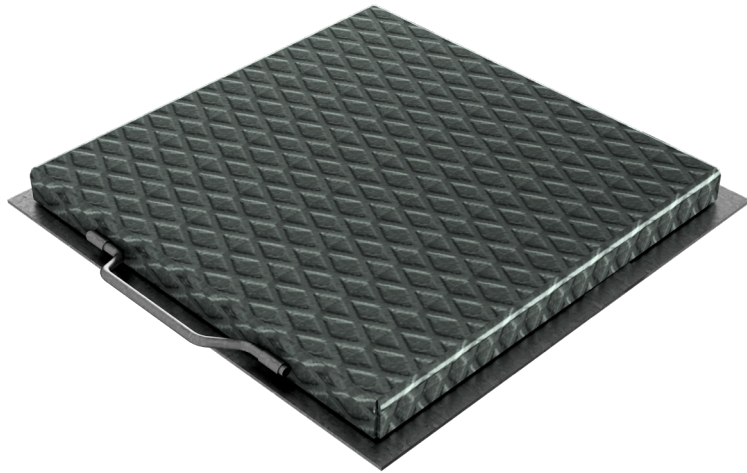


## TECHNICAL SHEET

<b>ASSEMBLED CODE</b>	5028
<b>DESCRIPTION</b>	CISTERNA manhole cover in embossed metal sheet 30/10, hot-dip galvanized, c/w angular frame 35x3, with hinges and handle, set-up for locking.
<b>PRODUCT LINE</b>	Cisterna manhole covers
<b>FIRE RESISTANCE</b>	Class A1 according to standard EN 13501-1
<b>LOADING CLASS</b>	CL. 1 – Dense crowd UNI 11002-1:2009



Article dimensions mm	Clear opening measures mm	Weight Kg/each
730 x 730 x H35	660 x 660	19,16