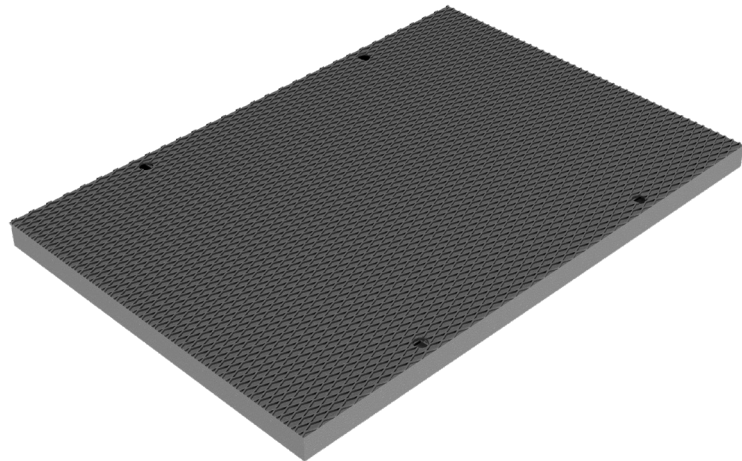
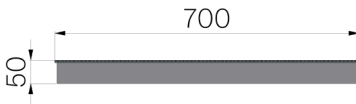


## TECHNICAL SHEET

<b>CODE</b>	4Y00P
<b>DESCRIPTION</b>	Plate in chequered 5+2 metal sheet, reinforced, with electro-forgewelded grating, bearing bar 40x4, mesh 34x76, hot-dip galvanized, without frame, set-up for locking at channel C700 c/w stainless steel bolts, loading class tractor-trailers.
<b>PRODUCT LINE</b>	Metal sheet plates for channels
<b>MATERIAL</b>	S235JR steel - EN 10025-2:2019
<b>SURFACE FINISH</b>	Hot Dip Galvanizing - UNI 1461
<b>UPPER SHEET METAL</b>	Embossed metal sheet plate 50/10
<b>BOTTOM REINFORCEMENT</b>	Forgewelded grating 40x4 34x76
<b>REACTION TO FIRE</b>	Class A1 according to standard EN 13501-1
<b>LOADING CLASS</b>	D400 - EN 1433:2008



Article dimensions mm	Weight Kg/each
700 x 1000 x H50	59,86