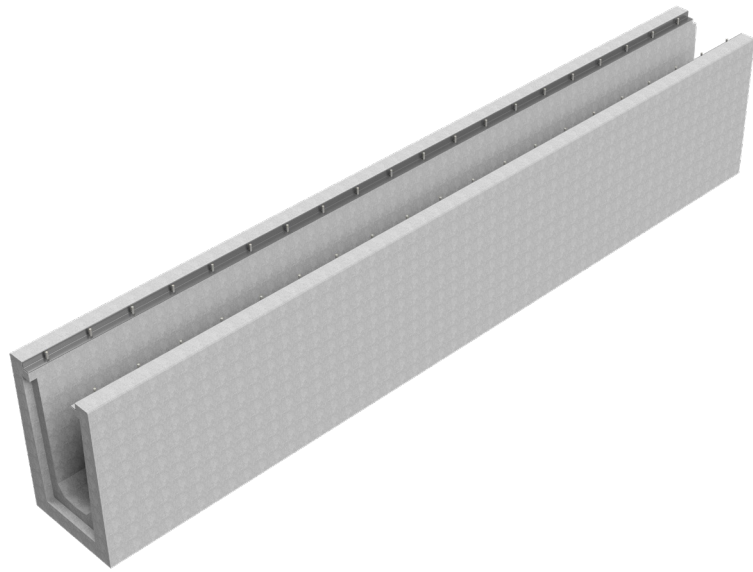
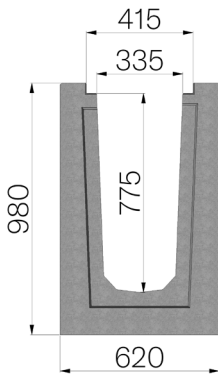


TECHNICAL SHEET



| | |
|--|---|
| CODE | 4XLM2S |
| DESCRIPTION | Channel mod. XL410, L=5000 H=980 in reinforced concrete, with Gridiron's special galvanized edge rails, suitable for grating dim. 410x500 H40. Channel runoff section cm ² 2334. Load class F900 according to EN 1433:2008 Norm, if installed following manufacturer instructions. |
| PRODUCT LINE | Drainage channel type "I" |
| MATERIAL | Reinforced concrete |
| SERIES TYPE | XL series 410 |
| SECTION TYPE | H3 |
| PROFILE TYPE | Galvanized edge |
| VERSION TYPE | Normal without built-in slope |
| STANDARD | EN 1433:2008 |
| LOADING CLASS | F900 - EN 1433:2008 |
| INTENDED USE OR USES OF THE PRODUCT | Collection and channelling of surface water into areas subject to pedestrian and/or vehicle traffic according to the indicated flow rate. |
| DURABILITY | Grades of weathering resistance: W +R (§6.3.3.3 EN 1433:2008) |



| Article dimensions mm | Inner width mm | Runoff section cmq | Weight Kg/each |
|-----------------------|----------------|--------------------|----------------|
| 5000 x 620 x H 980 | 335 | 2.334 | 4.433 |