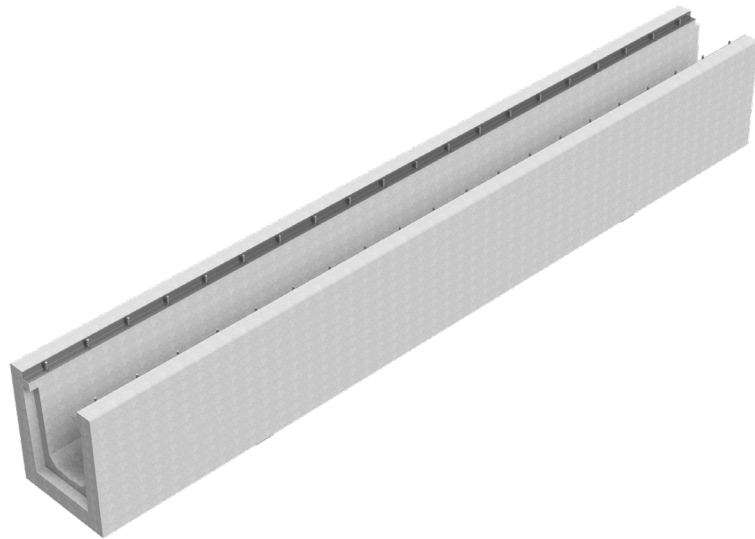
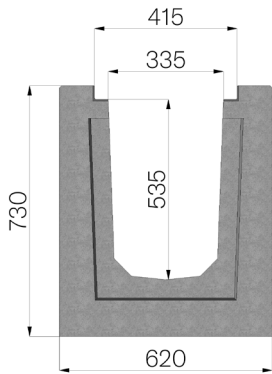


TECHNICAL SHEET



CODE	4XLM1S
DESCRIPTION	Channel mod. XL410, L=5000 H=730 in reinforced concrete, with Gridiron's special galvanized edge rails, suitable for grating dim. 410x500 H40. Channel runoff section cm ² 1617. Load class F900 according to EN 1433:2008 Norm, if installed following manufacturer instructions.
PRODUCT LINE	Drainage channel type "I"
MATERIAL	Reinforced concrete
SERIES TYPE	XL series 410
SECTION TYPE	H1
PROFILE TYPE	Galvanized edge
VERSION TYPE	Normal without built-in slope
STANDARD	EN 1433:2008
LOADING CLASS	F900 - EN 1433:2008
INTENDED USE OR USES OF THE PRODUCT	Collection and channelling of surface water into areas subject to pedestrian and/or vehicle traffic according to the indicated flow rate.
DURABILITY	Grades of weathering resistance: W +R (§6.3.3.3 EN 1433:2008)



Article dimensions mm	Inner width mm	Runoff section cmq	Weight Kg/each
5000 x 620 x H 730	335	1.617	3.432