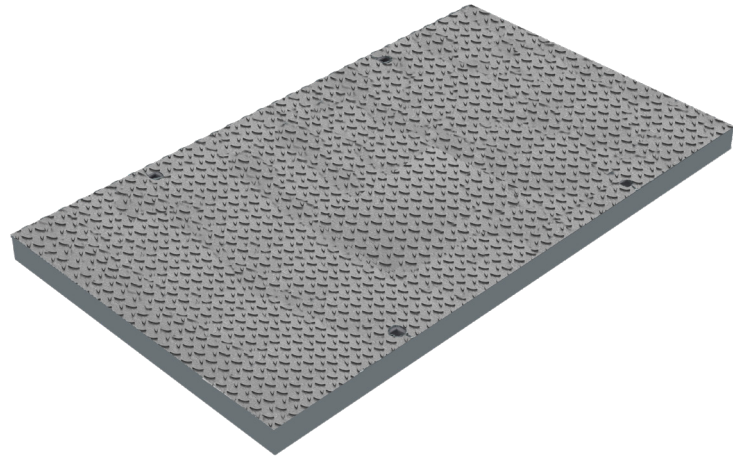
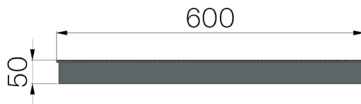


TECHNICAL SHEET

| | |
|-----------------------------|---|
| CODE | 4X00P |
| DESCRIPTION | - |
| PRODUCT LINE | Metal sheet plates for channels |
| MATERIAL | S235JR steel - EN 10025-2:2019 |
| SURFACE FINISH | Hot Dip Galvanizing - UNI 1461 |
| UPPER SHEET METAL | Embossed metal sheet plate 50/10 |
| BOTTOM REINFORCEMENT | Forgewelded grating 40x4 34x76 |
| REACTION TO FIRE | Class A1 according to standard EN 13501-1 |
| LOADING CLASS | D400 - EN 1433:2008 |



| Article dimensions mm | Weight Kg/each |
|-----------------------|----------------|
| 600 x 1000 x H50 | 54 |