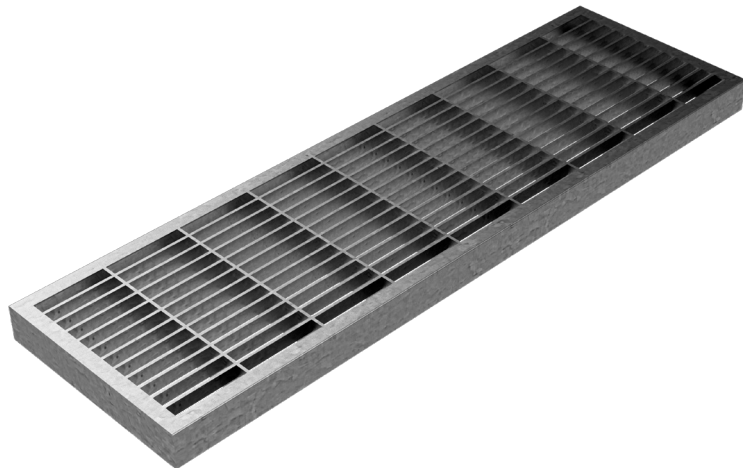
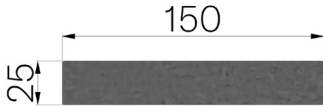


TECHNICAL SHEET



CODE	4RP1GPA
DESCRIPTION	Press-locked grating panel, in S235JR UNI EN 10025-2:2019 steel, bearing bar 25x2, transverse bar 10x2, mesh 33x11 (heelguard), with C shaped edge, c/w 4 meshes for locking grating at R150 drain channel, hot-dip galvanized. Loading class C250 UNI EN 1433:2008.
PRODUCT LINE	Press-locked
MATERIAL	S235JR steel - EN 10025-2:2019
SURFACE FINISH	Hot Dip Galvanizing - UNI 1461
STANDARD	EN 1090-1:2009 + A1:2011
INTENDED USE OR USES OF THE PRODUCT	Collection and channelling of surface water into areas subject to pedestrian and/or vehicle traffic according to the indicated flow rate.
DURABILITY	Galvanized surface as per standard EN ISO 1461. Galvanizing durability according to EN ISO 14713.
REACTION TO FIRE	Class A1 according to standard EN 13501-1
LOADING CLASS	C250 - EN 1433:2008



Article dimensions mm	Weight Kg/each
150 x 1000 x H 25	1,9