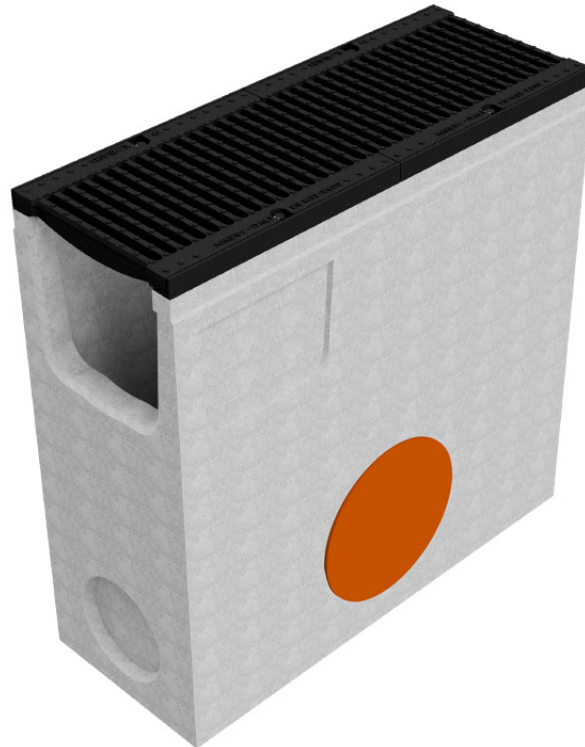
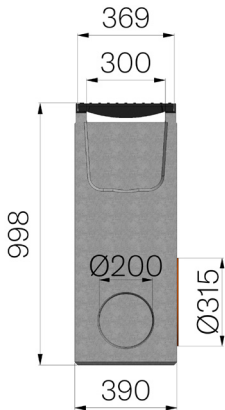


TECHNICAL SHEET



ASSEMBLED CODE	4RG5PZGE
DESCRIPTION	Fiber reinforced concrete sump unit for channel MOD. R365, c/w lateral outlet with sleeve with seal and cap Ø315 mm, n.3 knock-out section for additional drainage point Ø200 mm and a lateral connector sleeve for "T" intersection, c/w n. 2 x GJS500-7 ductile iron grating dim. 365x500 H30 mm, installed and locked, painted. Load class E600 according to EN 1433:2008 Norm, if installed following manufacturer instructions.
PRODUCT LINE	Fiber reinforced concrete sump units
STANDARD	EN 1433:2008
LOADING CLASS	E600 - EN 1433:2008
INTENDED USE OR USES OF THE PRODUCT	Collection and channelling of surface water into areas subject to pedestrian and/or vehicle traffic according to the indicated flow rate.
DURABILITY	Grades of weathering resistance: W +R (§6.3.3.3 EN 1433:2008)
QUANTITY PER PACK	16
1) CHANNEL	4RG5PZ
MATERIAL	Fiber reinforced concrete
SERIES TYPE	R series 365
SECTION TYPE	Standard
PROFILE TYPE	ductile iron PROFILES
VERSION TYPE	Normal without built-in slope
2) GRID	4R05GSE
GRID TYPE	Ductile-iron Grid
MATERIAL	Ductile-Iron GJS500-7 : EN1563
SURFACE FINISH	Paint coating



Article dimensions mm	Inner width mm	Runoff section cmq	Bottom outlet mm	Weight Kg/each
1000 x 390 x H 998	300	835	315	418