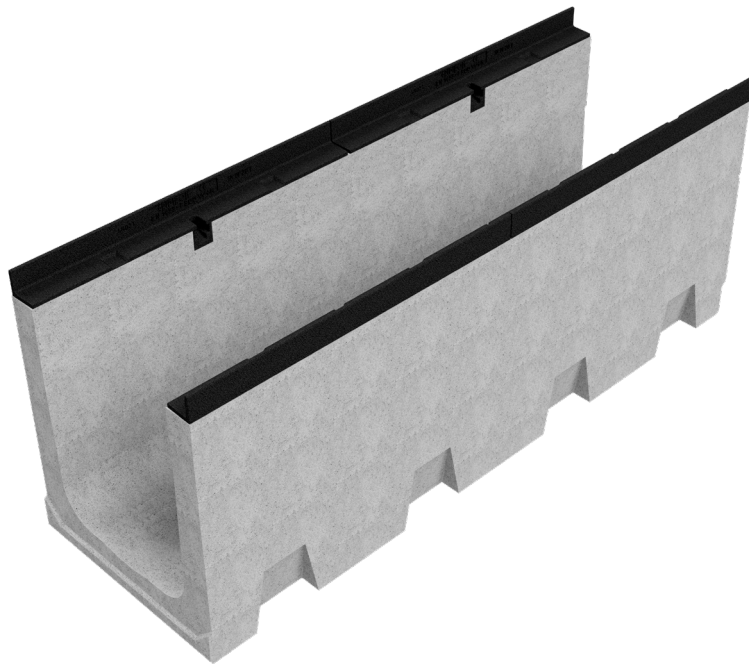
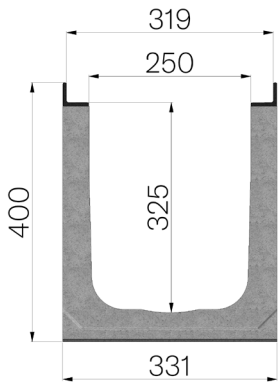


# TECHNICAL SHEET



<b>CODE</b>	4RG42S
<b>DESCRIPTION</b>	Vibro-compressed concrete channel MOD. R315 H3 (H400), with ductile iron protective edge rails, suitable for grating dim. 315x1000 H30 mm. Channel runoff section sqcm. 778. Load class F900 according to EN 1433:2008 Norm, if installed following manufacturer instructions.
<b>PRODUCT LINE</b>	Drainage channel type "M"
<b>MATERIAL</b>	Vibro-compressed Concrete
<b>SERIES TYPE</b>	R series 315
<b>SECTION TYPE</b>	H3
<b>PROFILE TYPE</b>	ductile iron PROFILES
<b>VERSION TYPE</b>	Normal without built-in slope
<b>LOADING CLASS</b>	F900 - EN 1433:2008



Article dimensions mm	Inner width mm	Runoff section cmq	Weight Kg/each
1000 x 331 x H 400	250	778	111,75