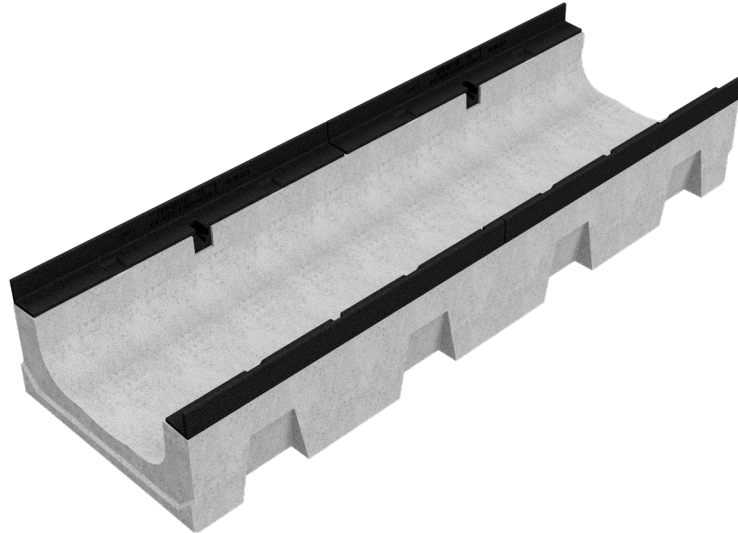
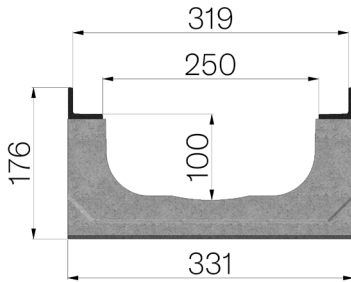


TECHNICAL SHEET



CODE	4RG41S
DESCRIPTION	Vibro-compressed concrete channel MOD. R315 H2 (H176), with ductile iron protective edge rails, suitable for grating dim. 315x1000 H30 mm. Channel runoff section sqcm. 224. Load class F900 according to EN 1433:2008 Norm, if installed following manufacturer instructions.
PRODUCT LINE	Drainage channel type "M"
MATERIAL	Vibro-compressed Concrete
SERIES TYPE	R series 315
SECTION TYPE	H2
PROFILE TYPE	ductile iron PROFILES
VERSION TYPE	Normal without built-in slope
LOADING CLASS	F900 - EN 1433:2008



Article dimensions mm	Inner width mm	Runoff section cmq	Weight Kg/each
1000 x 331 x H 176	250	224	66,4