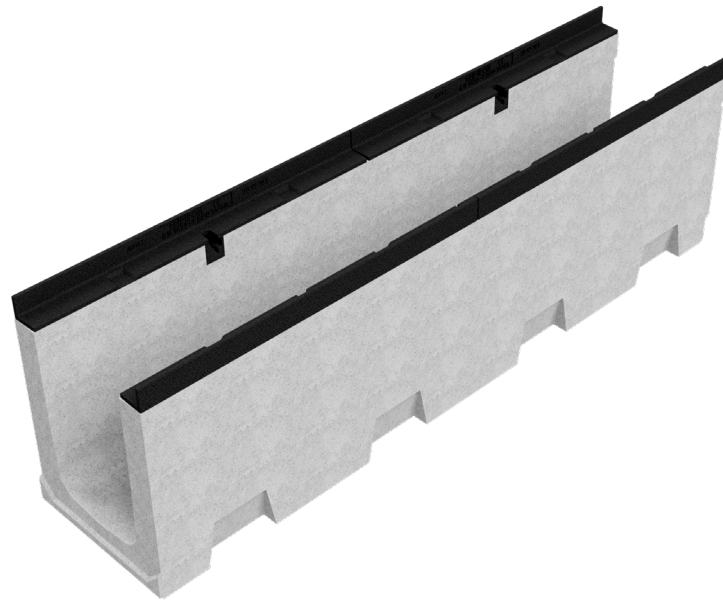
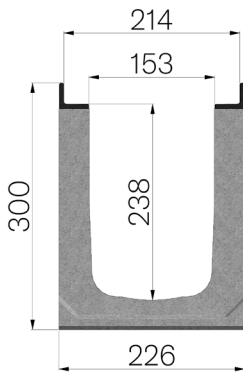


TECHNICAL SHEET



CODE	4RG22S
DESCRIPTION	Vibro-compressed concrete channel MOD. R210 (H3), H300 mm, with galvanized protective edge rails, suitable for grating dim. 210x1000 H25 mm. Channel runoff section sqcm. 350. Load class F900 according to EN 1433:2008 Norm, if installed following manufacturer instructions.
PRODUCT LINE	Drainage channel type "M"
MATERIAL	Vibro-compressed Concrete
SERIES TYPE	R series 210
SECTION TYPE	H3
PROFILE TYPE	ductile iron PROFILES
VERSION TYPE	Normal without built-in slope
LOADING CLASS	F900 - EN 1433:2008



Article dimensions mm	Inner width mm	Runoff section cmq	Weight Kg/each
1000 x 226 x H 300	153	350	67,1