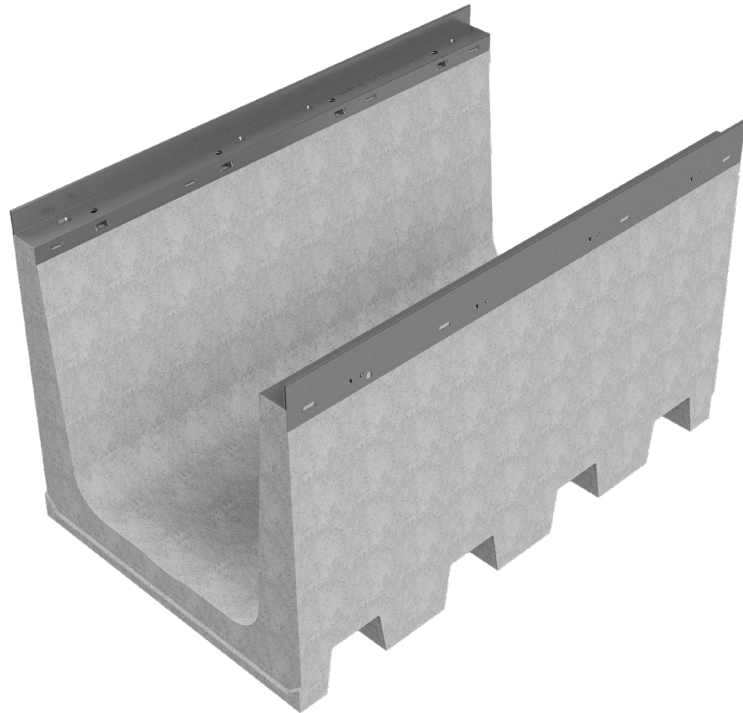
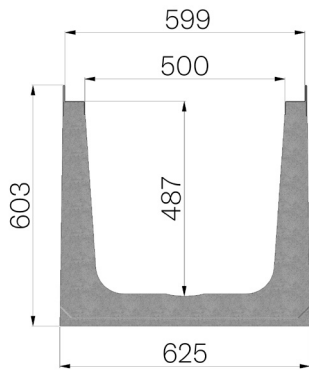


TECHNICAL SHEET



CODE	4R15S
DESCRIPTION	Vibro-compressed concrete channel MOD. R595 (H1), H603 mm, with galvanized protective edge rails, suitable for grating dim. 595x1000 H40 mm. Channel runoff section sqcm. 2225. Load class D400 according to EN 1433:2008 Norm, if installed following manufacturer instructions.
PRODUCT LINE	Drainage channel type "M"
MATERIAL	Vibro-compressed Concrete
SERIES TYPE	R series 595
SECTION TYPE	H1
PROFILE TYPE	Galvanized edge
VERSION TYPE	Normal without built-in slope
LOADING CLASS	E600 - EN 1433:2008



Article dimensions mm	Inner width mm	Runoff section cmq	Weight Kg/each
1000 x 625 x H 603	500	2.246	297