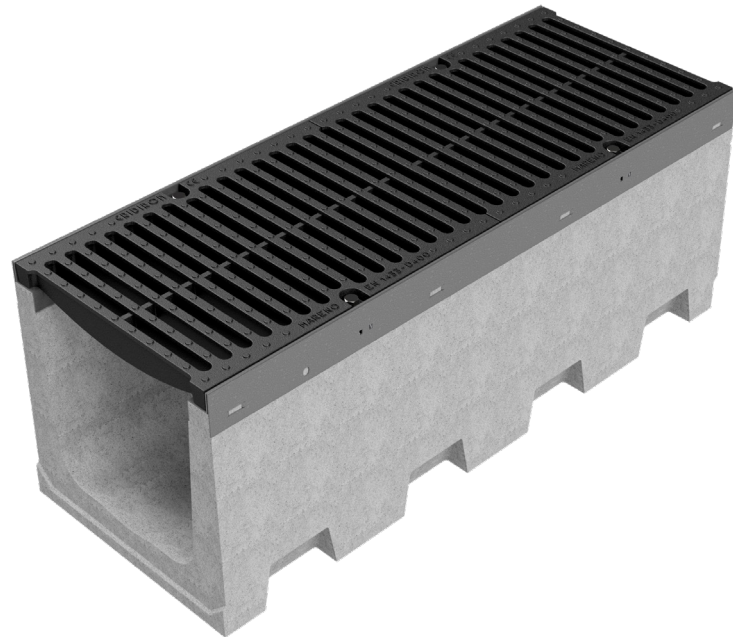
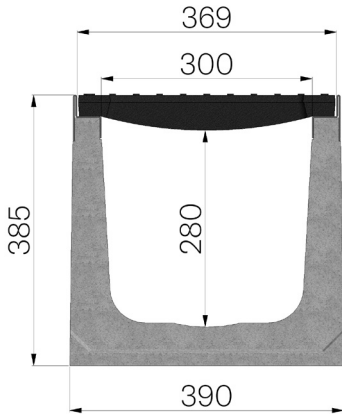


TECHNICAL SHEET



| | |
|--|---|
| ASSEMBLED CODE | 4R05SGG |
| DESCRIPTION | Vibro-compressed concrete channel MOD. R365, with galvanized protective edge rails, c/w n. 2 x GJS500-7 ductile iron gratings dim. 365x500 H30 mm. installed and locked, painted. Channel runoff section cm ² 835. Load class D400 according to EN 1433:2008 Norm, if installed following manufacturer instructions. |
| PRODUCT LINE | Drainage channel type "M" |
| STANDARD | EN 1433:2008 |
| LOADING CLASS | D400 - EN 1433:2008 |
| INTENDED USE OR USES OF THE PRODUCT | Collection and channelling of surface water into areas subject to pedestrian and/or vehicle traffic according to the indicated flow rate. |
| DURABILITY | Grades of weathering resistance: W +R (§6.3.3.3 EN 1433:2008) |
| QUANTITY PER PACK | 9 |
| 1) CHANNEL | 4R05S |
| MATERIAL | Vibro-compressed Concrete |
| SERIES TYPE | R series 365 |
| SECTION TYPE | H1 |
| PROFILE TYPE | Galvanized edge |
| VERSION TYPE | Normal without built-in slope |
| WATER FLOW LT / SEC | 0,5%=120 - 1%=169 - 1,5%=207 - 2%=239 - 3%=293 |
| 2) GRID | 4R05GS1 |
| GRID TYPE | Ductile-iron Grid |
| MATERIAL | Ductile-Iron GJS500-7 : EN1563 |
| SURFACE FINISH | Paint coating |



| Article dimensions mm | Inner width mm | Runoff section cmq | Weight Kg/each |
|-----------------------|----------------|--------------------|----------------|
| 1000 x 390 x H 385 | 300 | 835 | 165 |