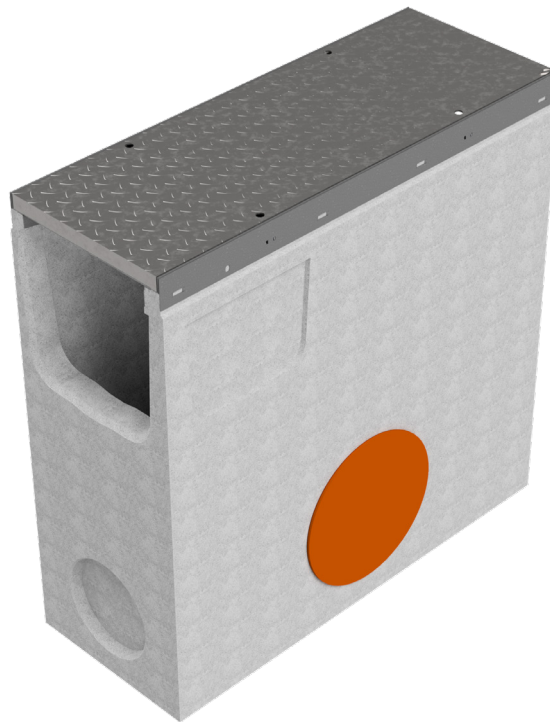
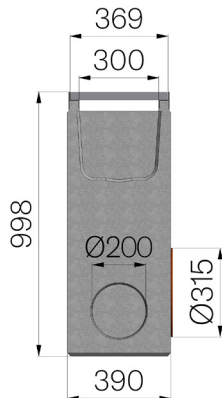


## TECHNICAL SHEET



<b>ASSEMBLED CODE</b>	4R05PZP
<b>DESCRIPTION</b>	Fiber reinfor concrete Sump unit for channel MOD. R365, c/w lateral outlet with sleeve with seal and cap Ø315 mm, n.3 knock-out section for additional drainage point Ø200 mm and a lateral connector sleeve for "T" intersection, c/w embossed metal sheet plate, th. 30/10, reinforced, installed and locked, hot-dip galvanized. Load class D400 according to EN 1433:2008 Norm, if installed following manufacturer instructions.
<b>PRODUCT LINE</b>	Fiber reinforced concrete sump units
<b>STANDARD</b>	EN 1433:2008
<b>LOADING CLASS</b>	D400 - EN 1433:2008
<b>INTENDED USE OR USES OF THE PRODUCT</b>	Collection and channelling of surface water into areas subject to pedestrian and/or vehicle traffic according to the indicated flow rate.
<b>DURABILITY</b>	Grades of weathering resistance: W +R (§6.3.3.3 EN 1433:2008)
<b>QUANTITY PER PACK</b>	16
<b>1) CHANNEL</b>	4R05PZ
<b>MATERIAL</b>	Constant flow concrete
<b>SERIES TYPE</b>	R series 365
<b>SECTION TYPE</b>	Standard
<b>PROFILE TYPE</b>	Galvanized edge
<b>VERSION TYPE</b>	Normal without built-in slope
<b>2) METAL SHEET PLATE</b>	4R05P
<b>TYPE OF METAL PLATE</b>	Metal sheet plates for channels
<b>MATERIAL</b>	Carbon Steel S235JR acc. to EN 10025-2:2019
<b>UPPER SHEET METAL</b>	Embossed metal sheet plate 30/10



Article dimensions mm	Inner width mm	Runoff section cmq	Bottom outlet mm	Weight Kg/each
1000 x 390 x H 998	300	835	Ø315	404