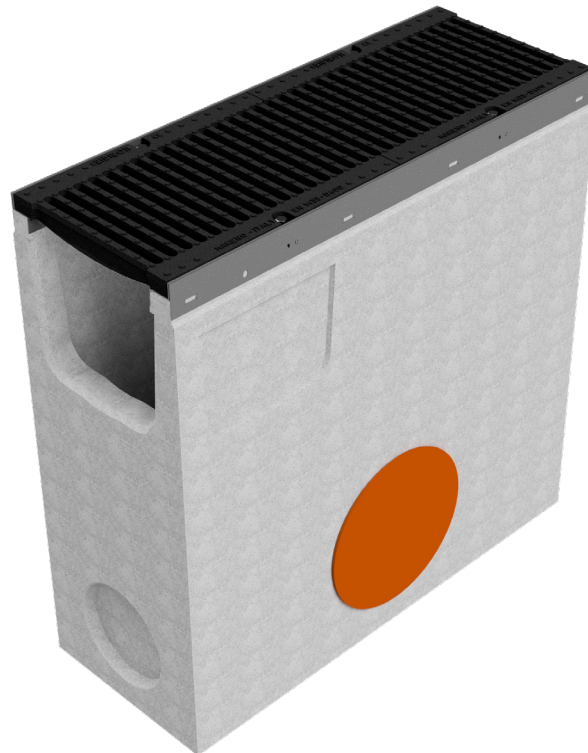
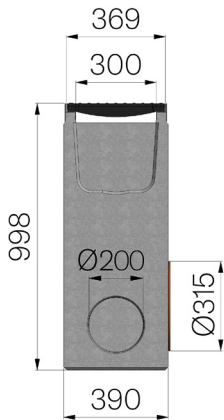


TECHNICAL SHEET



ASSEMBLED CODE	4R05PZGS
DESCRIPTION	Fiber reinforced concrete Sump unit for channel MOD. R365, c/w lateral outlet with sleeve with seal and cap Ø315 mm, n.3 knock-out section for additional drainage point Ø200 mm and a lateral connector sleeve for "T" intersection, c/w n. 2 x GJS500-7 ductile iron grating dim. 365x500 H30 mm, installed and locked, painted. Load class D400 according to EN 1433:2008 Norm, if installed following manufacturer instructions.
PRODUCT LINE	Fiber reinforced concrete sump units
STANDARD	EN 1433:2008
LOADING CLASS	D400 - EN 1433:2008
DURABILITY	Grades of weathering resistance: W +R (§6.3.3.3 EN 1433:2008)
QUANTITY PER PACK	16
1) CHANNEL	4R05PZ
MATERIAL	Constant flow concrete
SERIES TYPE	R series 365
SECTION TYPE	Standard
PROFILE TYPE	Galvanized edge
VERSION TYPE	Normal without built-in slope
2) GRID	4R05GS1
GRID TYPE	Ductile-iron Grid
MATERIAL	Ductile-Iron GJS500-7 : EN1563
SURFACE FINISH	Paint coating



Article dimensions mm	Inner width mm	Runoff section cmq	Bottom outlet mm	Weight Kg/each
1000 x 390 x H 998	300	835	Ø315	408