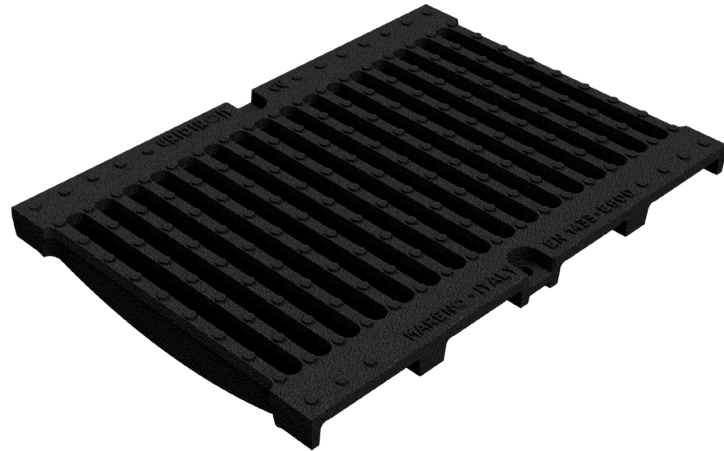
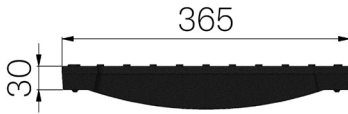


# TECHNICAL SHEET



<b>CODE</b>	4R05GSE
<b>DESCRIPTION</b>	GJS500-7 painted ductile iron grid, suitable for channel mod. R365, set-up for side locking, dim. 365x500 H60, loading class E600 accordingly to UNI-EN 1433:2008 Norm as for installation instructions.
<b>PRODUCT LINE</b>	Ductile-iron Grid
<b>MATERIAL</b>	Ductile-Iron GJS500-7 : EN1563
<b>SURFACE FINISH</b>	Paint coating
<b>STANDARD</b>	EN 1433:2008
<b>INTENDED USE OR USES OF THE PRODUCT</b>	Collection and channelling of surface water into areas subject to pedestrian and/or vehicle traffic according to the indicated flow rate.
<b>DURABILITY</b>	NPD
<b>REACTION TO FIRE</b>	Class A1 according to standard EN 13501-1
<b>LOADING CLASS</b>	E600 - EN 1433:2008



Article dimensions mm	Slot size	Weight Kg/each
365 x 500 x H 30	17 mm x 190 mm	22,7