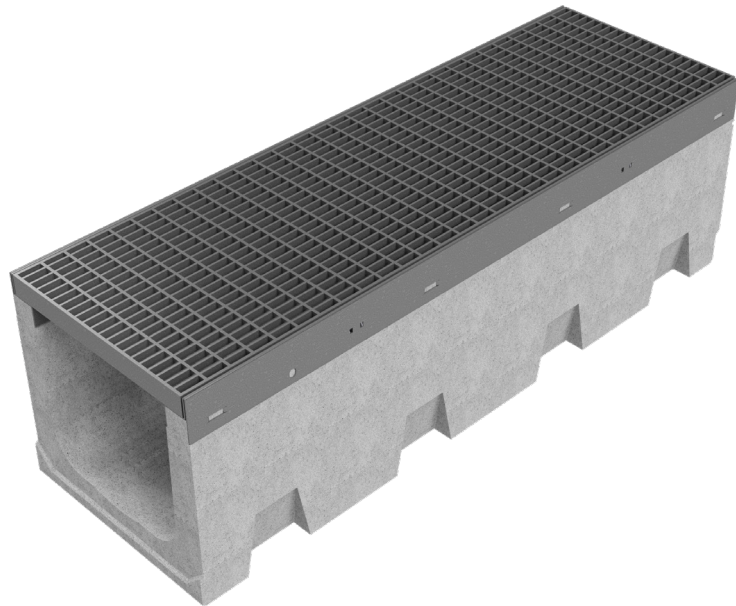
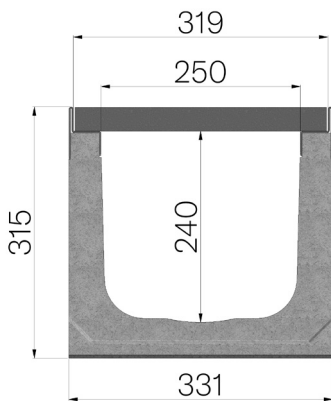


# TECHNICAL SHEET



<b>ASSEMBLED CODE</b>	4R04SGPA
<b>DESCRIPTION</b>	Vibro-compressed concrete channel MOD. R315, with galvanized protective edge rails, c/w S235JR steel pressure-locked grating, bearing bar 30x4 mm, transverse bar 10x3 mm, 33x11 mm heelguard mesh, installed and locked, hot-dip galvanized, dim. 315x1000 H30 mm. Channel runoff section cm <sup>2</sup> 562. Load class C250 according to EN 1433:2008 Norm, if installed following manufacturer instructions.
<b>PRODUCT LINE</b>	Drainage channel type "M"
<b>STANDARD</b>	EN 1433:2008
<b>LOADING CLASS</b>	C250 - EN 1433:2008
<b>INTENDED USE OR USES OF THE PRODUCT</b>	Collection and channelling of surface water into areas subject to pedestrian and/or vehicle traffic according to the indicated flow rate.
<b>DURABILITY</b>	Grades of weathering resistance: W +R (§6.3.3.3 EN 1433:2008)
<b>QUANTITY PER PACK</b>	9
<b>1) CHANNEL</b>	4R04S
<b>MATERIAL</b>	Vibro-compressed Concrete
<b>SERIES TYPE</b>	R series 315
<b>SECTION TYPE</b>	H1
<b>PROFILE TYPE</b>	Galvanized edge
<b>VERSION TYPE</b>	Normal without built-in slope
<b>WATER FLOW LT / SEC</b>	0,5%=72 -1%=101,8 - 1,5%=124,7 - 2%=144 - 3%=176,4
<b>2) GRID</b>	4R04GPA
<b>GRID TYPE</b>	Press-locked
<b>MATERIAL</b>	Carbon Steel S235JR acc. to EN 10025-2:2019
<b>SURFACE FINISH</b>	Hot Dip Galvanizing - UNI 1461



Article dimensions mm	Inner width mm	Runoff section cmq	Weight Kg/each
1000 x 331 x H 315	250	562	106,62