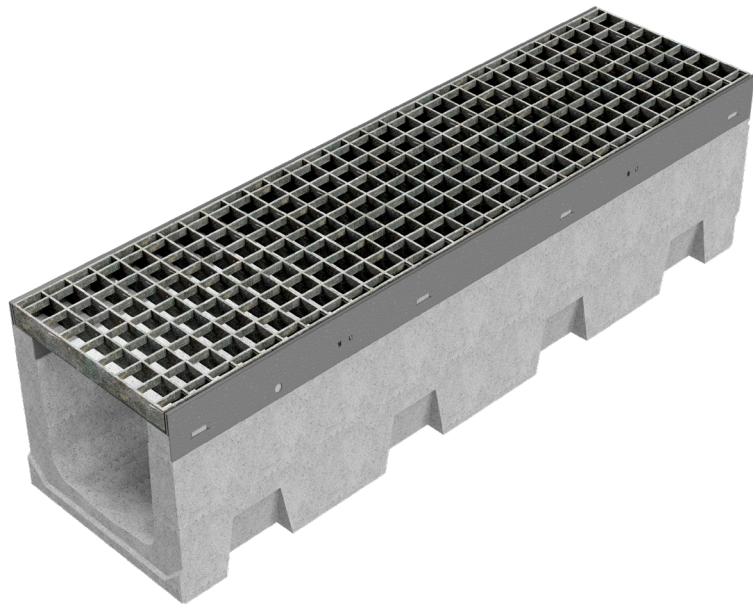
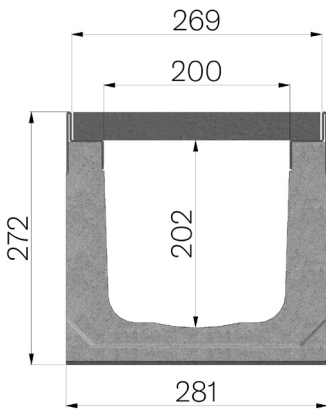


TECHNICAL SHEET



ASSEMBLED CODE	4R03SGP
DESCRIPTION	Vibro-compressed concrete channel MOD. R265, with galvanized protective edge rails, c/w S235JR steel pressure-locked grating, bearing bar 30x3 mm, transverse bar 10x2 mm, 33x33 mm mesh, installed and locked, hot-dip galvanized, dim. 265x1000 H30 mm. Channel runoff section sqcm. 376. Load class C250 according to EN 1433:2008 Norm, if installed following manufacturer instructions.
PRODUCT LINE	Drainage channel type "M"
STANDARD	EN 1433:2008
LOADING CLASS	C250 - EN 1433:2008
INTENDED USE OR USES OF THE PRODUCT	Collection and channelling of surface water into areas subject to pedestrian and/or vehicle traffic according to the indicated flow rate.
DURABILITY	Grades of weathering resistance: W +R (§6.3.3.3 EN 1433:2008)
QUANTITY PER PACK	16
1) CHANNEL	4R03S
MATERIAL	Vibro-compressed Concrete
SERIES TYPE	R series 265
SECTION TYPE	H1
PROFILE TYPE	Galvanized edge
VERSION TYPE	Normal without built-in slope
WATER FLOW LT / SEC	0,5%=42,3 - 1%=59,8 - 1,5%=73,3 - 2%=84,6 - 3%=103,7
2) GRID	4R03GP
GRID TYPE	Press-locked
MATERIAL	Carbon Steel S235JR acc. to EN 10025-2:2019
SURFACE FINISH	Hot Dip Galvanizing - UNI 1461



Article dimensions mm	Inner width mm	Runoff section cmq	Weight Kg/each
1000 x 281 x H 272	200	376	80,56