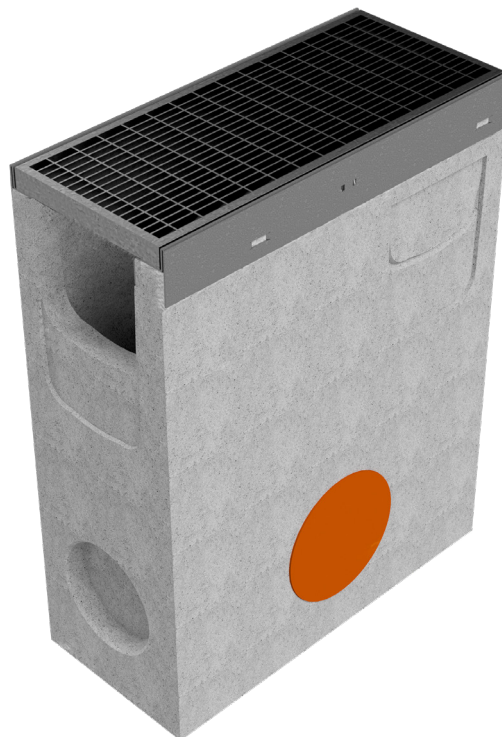
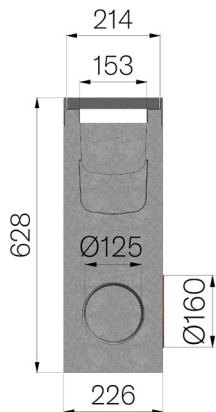


TECHNICAL SHEET



| | |
|--|--|
| ASSEMBLED CODE | 4R02PZGPA |
| DESCRIPTION | Fiber reinforced concrete Sump unit for channel MOD. R210, c/w sleeve with seal and cap for lateral outlet Ø160 mm, n.1 knock-out section for additional drainage point Ø125 mm and a lateral connector sleeve for "T" intersection, c/w S235JR steel pressure-locked grating, bearing bar 25x2 mm, transverse bar 10x2 mm, 33x11 mm heelguard mesh, installed and locked, hot-dip galvanized, dim. 210x1000 H25 mm. Load class C250 according to EN 1433:2008 Norm, if installed following manufacturer instructions. |
| PRODUCT LINE | Fiber reinforced concrete sump units |
| STANDARD | EN 1433:2008 |
| LOADING CLASS | C250 - EN 1433:2008 |
| INTENDED USE OR USES OF THE PRODUCT | Collection and channelling of surface water into areas subject to pedestrian and/or vehicle traffic according to the indicated flow rate. |
| DURABILITY | Grades of weathering resistance: W +R (§6.3.3.3 EN 1433:2008) |
| QUANTITY PER PACK | 8 |
| 1) CHANNEL | 4R02PZ |
| MATERIAL | Constant flow concrete |
| SERIES TYPE | R series 210 |
| SECTION TYPE | Standard |
| PROFILE TYPE | Galvanized edge |
| VERSION TYPE | Normal without built-in slope |
| 2) GRID | 4R02MGPA |
| GRID TYPE | Press-locked |
| MATERIAL | Carbon Steel S235JR acc. to EN 10025-2:2019 |
| SURFACE FINISH | Hot Dip Galvanizing - UNI 1461 |



| Article dimensions mm | Inner width mm | Runoff section cmq | Bottom outlet mm | Weight Kg/each |
|-----------------------|----------------|--------------------|------------------|----------------|
| 500 x 226 x H 628 | 153 | 216 | 160 | 81,15 |