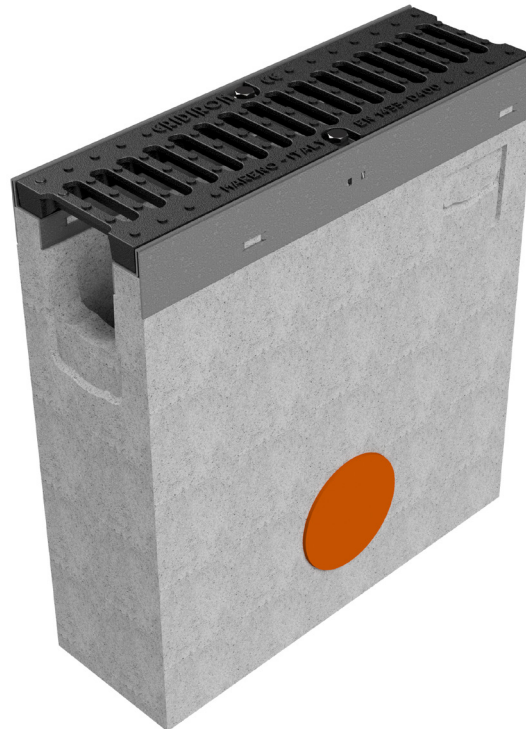
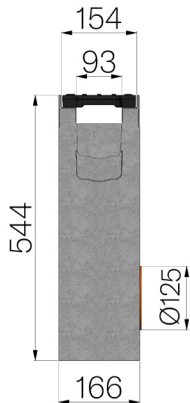


## TECHNICAL SHEET



<b>ASSEMBLED CODE</b>	4R01PZGS
<b>DESCRIPTION</b>	Fiber reinforced concrete Sump unit for channel MOD. R150, c/w lateral outlet with sleeve with seal and cap Ø125 mm, n.1 knock-out section for additional drainage point Ø125 mm and a lateral connector sleeve for "T" intersection, c/w n.1 x GJS500-7 ductile iron grating dim. 150x500 H25 mm, installed and locked, painted. Load class D400 according to EN 1433:2008 Norm, if installed following manufacturer instructions.
<b>PRODUCT LINE</b>	Fiber reinforced concrete sump units
<b>STANDARD</b>	EN 1433:2008
<b>LOADING CLASS</b>	D400 - EN 1433:2008
<b>INTENDED USE OR USES OF THE PRODUCT</b>	Collection and channelling of surface water into areas subject to pedestrian and/or vehicle traffic according to the indicated flow rate.
<b>DURABILITY</b>	Grades of weathering resistance: W +R (§6.3.3.3 EN 1433:2008)
<b>QUANTITY PER PACK</b>	12
<b>1) CHANNEL</b>	4R01PZ
<b>MATERIAL</b>	Fiber reinforced concrete
<b>SERIES TYPE</b>	R series 150
<b>SECTION TYPE</b>	Standard
<b>PROFILE TYPE</b>	Galvanized edge
<b>VERSION TYPE</b>	Normal without built-in slope
<b>2) GRID</b>	4R01GS2
<b>GRID TYPE</b>	Ductile-iron Grid
<b>MATERIAL</b>	Ductile-Iron GJS500-7 : EN1563
<b>SURFACE FINISH</b>	Paint coating



Article dimensions mm	Inner width mm	Runoff section cmq	Bottom outlet mm	Weight Kg/each
500 x 166 x H 544	93	90	125	68,48