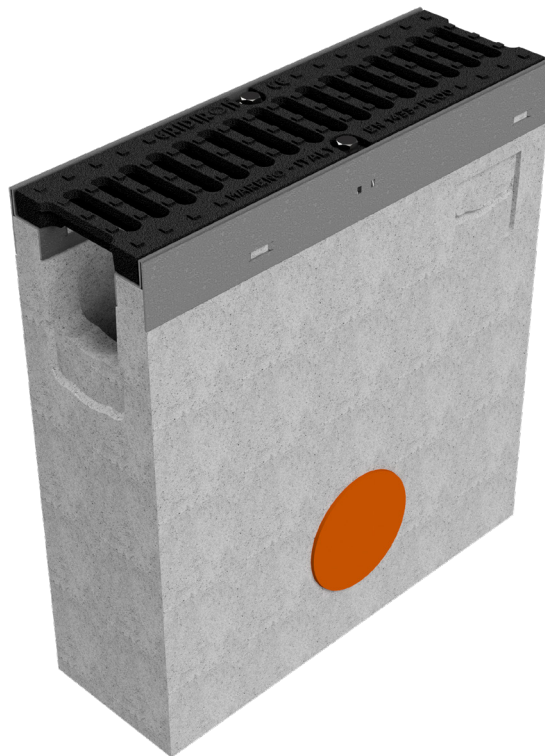
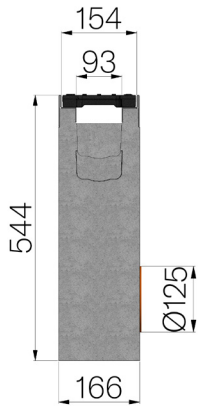


TECHNICAL SHEET



ASSEMBLED CODE	4R01PZGSF
DESCRIPTION	Reinforced concrete sump unit for channel MOD. R150, c/w lateral outlet with sleeve with seal and cap Ø125 mm, n.1 knock-out section for additional drainage point Ø125 mm and a lateral connector sleeve for "T" intersection, c/w n.1 x GJS500-7 ductile iron grating dim. 150x500 H25 mm, installed and locked, painted. Load class F900 according to EN 1433:2008 Norm, if installed following manufacturer instructions.
PRODUCT LINE	Fiber reinforced concrete sump units
LOADING CLASS	F900 - EN 1433:2008
QUANTITY PER PACK	10
1) CHANNEL	4R01PZ
MATERIAL	Constant flow concrete
SERIES TYPE	R series 150
SECTION TYPE	Standard
PROFILE TYPE	Galvanized edge
VERSION TYPE	Normal without built-in slope
2) GRID	4R01GSF
GRID TYPE	Ductile-iron Grid
MATERIAL	Ductile-Iron GJS500-7 : EN1563
SURFACE FINISH	Paint coating



Article dimensions mm	Inner width mm	Runoff section cmq	Bottom outlet mm	Weight Kg/each
500 x 166 x H 544	93	90	125	69,49