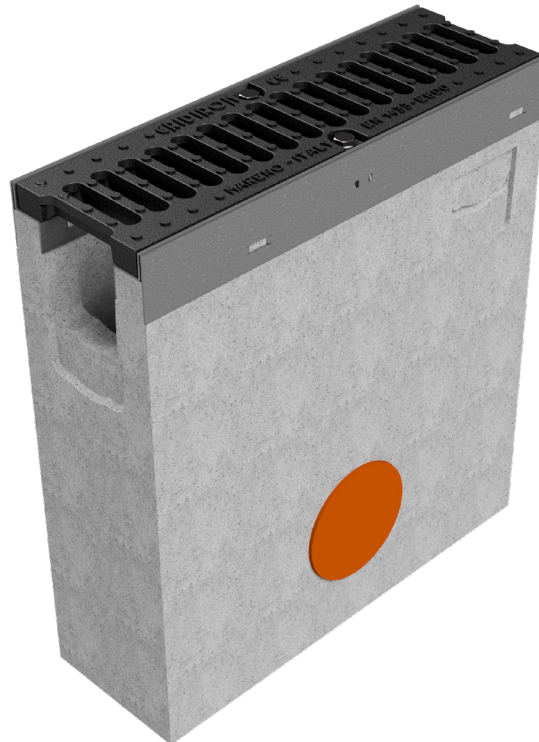
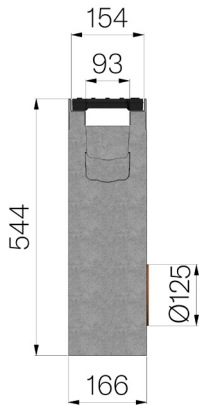


## TECHNICAL SHEET



|  |   |
|--|---|
| <b>ASSEMBLED CODE</b>                      | 4R01PZGSE   |
| <b>DESCRIPTION</b>                         | Reinforced concrete Sump unit for channel MOD. R150, c/w lateral outlet with sleeve with seal and cap Ø125 mm, n.1 knock-out section for additional drainage point Ø125 mm and a lateral connector sleeve for "T" intersection, c/w n.1 x GJS500-7 ductile iron grating dim. 150x500 H25 mm, installed and locked, painted. Load class E600 according to EN 1433:2008 Norm, if installed following manufacturer instructions. |
| <b>PRODUCT LINE</b>                        | Fiber reinforced concrete sump units  |
| <b>STANDARD</b>                            | EN 1433:2008  |
| <b>LOADING CLASS</b>                       | E600 - EN 1433:2008   |
| <b>INTENDED USE OR USES OF THE PRODUCT</b> | Collection and channelling of surface water into areas subject to pedestrian and/or vehicle traffic according to the indicated flow rate.   |
| <b>QUANTITY PER PACK</b>                   | 36  |
| <b>1) CHANNEL</b>                          | 4R01PZ  |
| <b>MATERIAL</b>                            | Fiber reinforced concrete   |
| <b>SERIES TYPE</b>                         | R series 150  |
| <b>SECTION TYPE</b>                        | Standard  |
| <b>PROFILE TYPE</b>                        | Galvanized edge   |
| <b>VERSION TYPE</b>                        | Normal without built-in slope   |
| <b>2) GRID</b>                             | 4R01GSE   |
| <b>GRID TYPE</b>                           | Ductile-iron Grid   |
| <b>MATERIAL</b>                            | Ductile-Iron GJS500-7 : EN1563  |
| <b>SURFACE FINISH</b>                      | Paint coating   |



| Article dimensions mm | Inner width mm | Runoff section cmq | Bottom outlet mm | Weight Kg/each |
|-----------------------|----------------|--------------------|------------------|----------------|
| 500 x 166 x H 544     | 93             | 90                 | 125              | 68,6           |