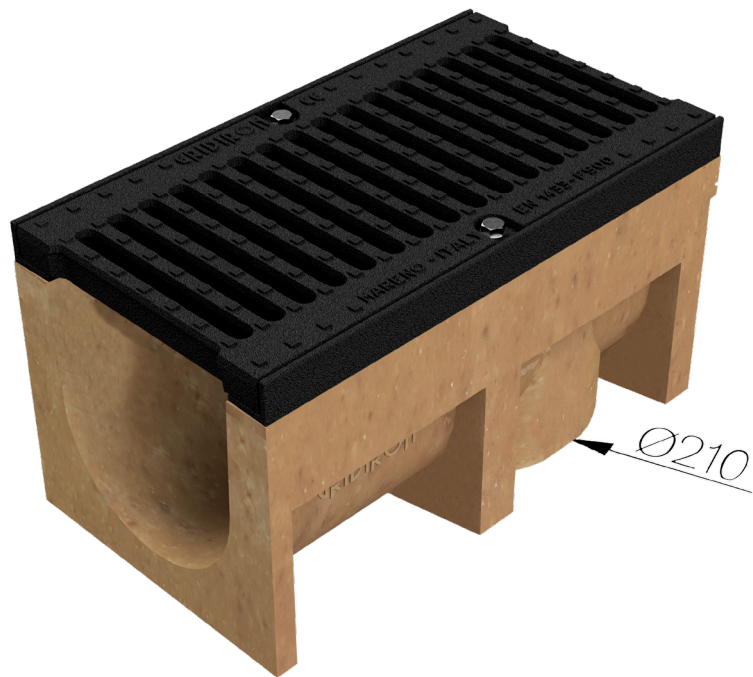
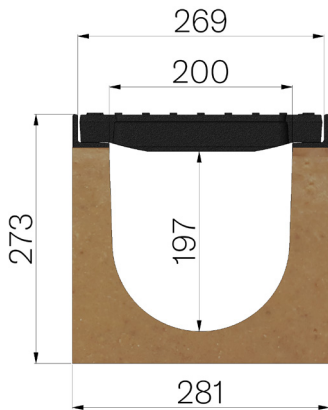


# TECHNICAL SHEET



<b>ASSEMBLED CODE</b>	4PG3MSGF
<b>DESCRIPTION</b>	P265 L=500 additivated polymer concrete drain channel, with Gridiron's special galvanized edge rails, c/w no.1 grid in ductile iron G25, dim. 265x500 H30, assembled and locked, runoff section sqcm. 365. Loading class F900 accordingly to Standards UNI-EN 1433:2008 Norm as for installation instructions.
<b>PRODUCT LINE</b>	Drainage channel type "M"
<b>LOADING CLASS</b>	F900 - EN 1433:2008
<b>QUANTITY PER PACK</b>	16
<b>1) CHANNEL</b>	4PG3MS
<b>MATERIAL</b>	Polymer Concrete
<b>SERIES TYPE</b>	P series 265
<b>SECTION TYPE</b>	Standard
<b>PROFILE TYPE</b>	ductile iron PROFILES
<b>VERSION TYPE</b>	Normal without built-in slope
<b>2) GRID</b>	4R03GSF
<b>GRID TYPE</b>	Ductile-iron Grid
<b>MATERIAL</b>	Ductile-Iron GJS500-7 : EN1563
<b>SURFACE FINISH</b>	Paint coating



Inner width mm	Runoff section cmq	Weight Kg/each
200	365	35,76