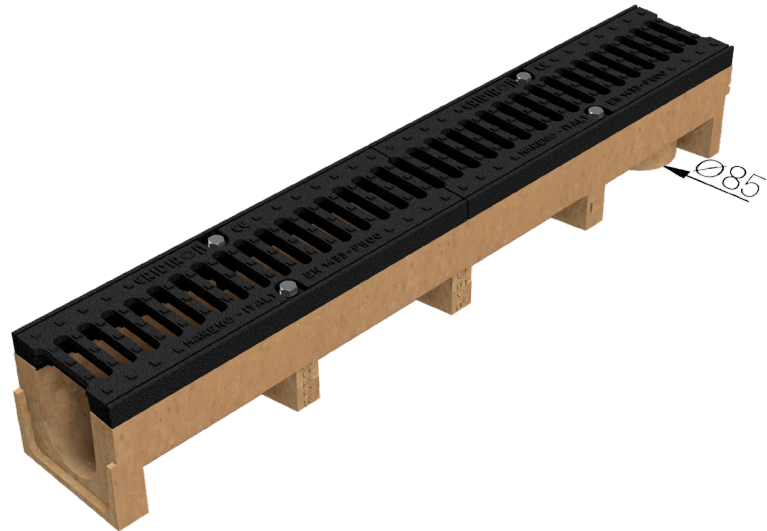
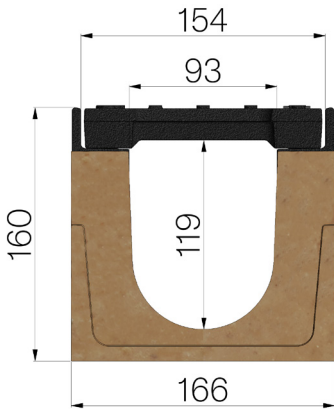


TECHNICAL SHEET



ASSEMBLED CODE	4PG1SGF
DESCRIPTION	P150 additivated polymer concrete drain channel, with ductile iron edge rails, c/w no.2 grids in GSJ500-7 painted cast iron, dim. 150x500 H25, assembled and locked, runoff section 95 sq-cm. Loading class F900 according to Standards UNI-EN 1433:2008 as for installation instructions.
PRODUCT LINE	Drainage channel type "M"
STANDARD	EN 1433:2008
LOADING CLASS	F900 - EN 1433:2008
INTENDED USE OR USES OF THE PRODUCT	Collection and channelling of surface water into areas subject to pedestrian and/or vehicle traffic according to the indicated flow rate.
DURABILITY	NPD
QUANTITY PER PACK	36
1) CHANNEL	4PG1S
MATERIAL	Polymer Concrete
SERIES TYPE	P series 150
SECTION TYPE	Standard
PROFILE TYPE	ductile iron PROFILES
VERSION TYPE	Normal without built-in slope
2) GRID	4R01GSF
GRID TYPE	Ductile-iron Grid
MATERIAL	Ductile-Iron GJS500-7 : EN1563
SURFACE FINISH	Paint coating



Article dimensions mm	Inner width mm	Runoff section cmq	Bottom outlet mm	Weight Kg/each
1000 x 166 x H 160	93	95	Ø 85	34,36