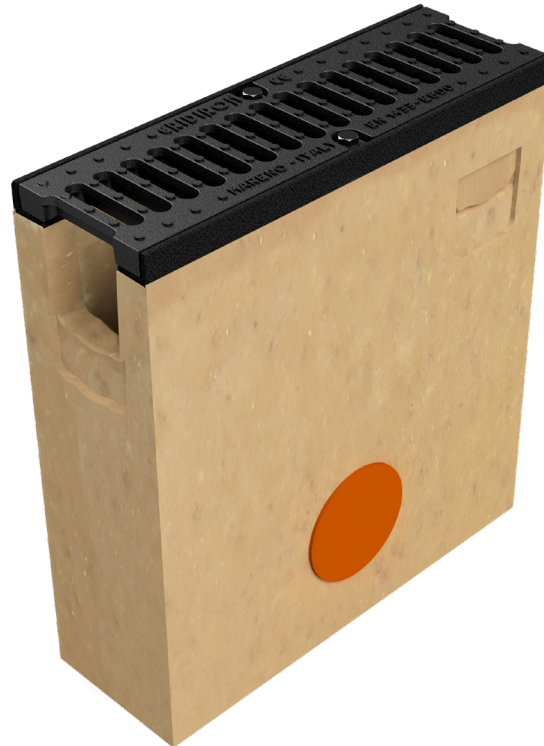
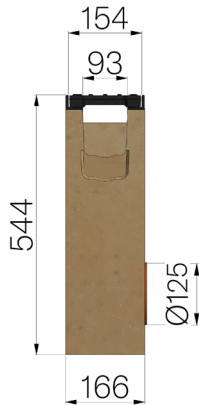


TECHNICAL SHEET



ASSEMBLED CODE	4PG1PZGE
DESCRIPTION	Polymer concrete sump unit P150, c/w ductile iron edges and ductile iron grid GSJ500-7 198x500, locked and assembled. Loading class E600 according to Standards UNI EN 1433:2008 Norm as for installation instructions.
STANDARD	EN 1433:2008
LOADING CLASS	E600 - EN 1433:2008
INTENDED USE OR USES OF THE PRODUCT	Collection and channelling of surface water into areas subject to pedestrian and/or vehicle traffic according to the indicated flow rate.
DURABILITY	NPD
1) CHANNEL	4PG1PZ
MATERIAL	Polymer Concrete
SERIES TYPE	P series 150
SECTION TYPE	Standard
VERSION TYPE	Normal without built-in slope
2) GRID	4R01GSE
GRID TYPE	Ductile-iron Grid
MATERIAL	Ductile-Iron GJS500-7 : EN1563
SURFACE FINISH	Paint coating



Article dimensions mm	Inner width mm	Runoff section cmq	Bottom outlet mm	Weight Kg/each
500 x 166 x H 544	93	95	Ø125	71,15