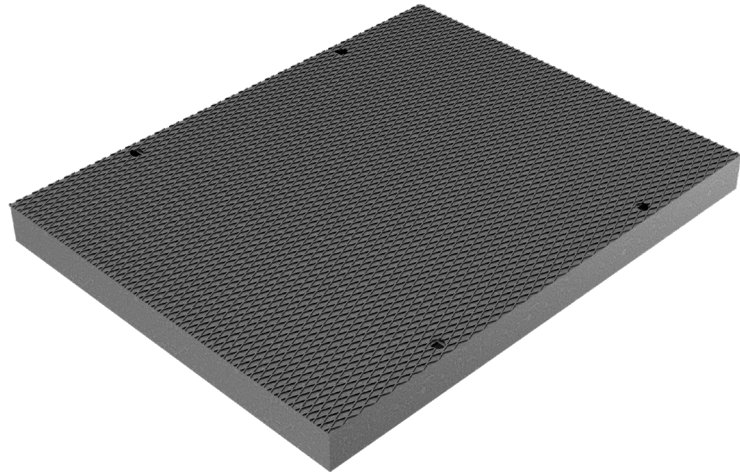


TECHNICAL SHEET

CODE	4J00P
DESCRIPTION	Embossed metal sheet plate Th. 5, S235JR, reinforced with forgewelded grid 70x4 25x76, hot dip galvanized, without frame, for C800 channel, complete with stainless steel nuts and bolts. Loading class: truck.
PRODUCT LINE	Metal sheet plates for channels
MATERIAL	S235JR steel - EN 10025-2:2019
SURFACE FINISH	Hot Dip Galvanizing - UNI 1461
UPPER SHEET METAL	Embossed metal sheet plate 50/10
BOTTOM REINFORCEMENT	Grating 70x4 25x76
REACTION TO FIRE	Class A1 according to standard EN 13501-1
LOADING CLASS	D400 - EN 1433:2008



Article dimensions mm	Weight Kg/each
785 x 1000 x H80	68,4