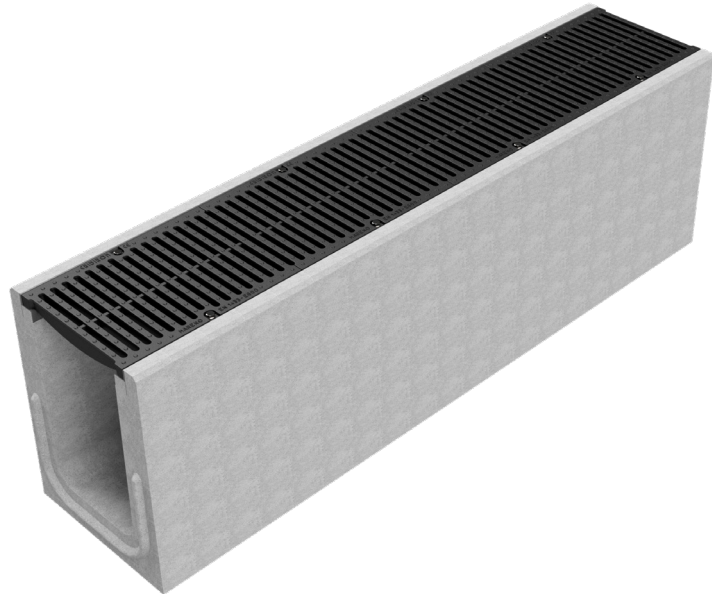
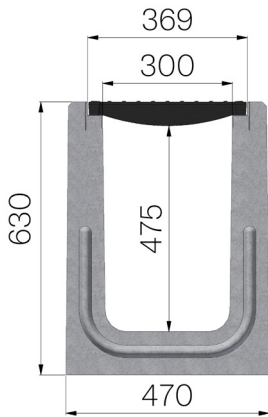


## TECHNICAL SHEET



|  |  |
|--|--|
| <b>ASSEMBLED CODE</b>                      | 41052SGE   |
| <b>DESCRIPTION</b>                         | Self-supporting reinforced concrete channel TYPE I, mod. I300, c/w protective edge rails galvanized and ductile iron grating loading class E600 as per EN 1433 Norm. |
| <b>STANDARD</b>                            | EN 1433:2008   |
| <b>LOADING CLASS</b>                       | E600 - EN 1433:2008  |
| <b>INTENDED USE OR USES OF THE PRODUCT</b> | Collection and channelling of surface water into areas subject to pedestrian and/or vehicle traffic according to the indicated flow rate.                            |
| <b>DURABILITY</b>                          | Grades of weathering resistance: W +R (§6.3.3.3 EN 1433:2008)  |
| <b>QUANTITY PER PACK</b>                   | 4  |
| <b>1) CHANNEL</b>                          | 41052S   |
| <b>MATERIAL</b>                            | Vibro-compressed reinforced concrete   |
| <b>SERIES TYPE</b>                         | I series 300   |
| <b>SECTION TYPE</b>                        | H3   |
| <b>PROFILE TYPE</b>                        | Galvanized edge  |
| <b>VERSION TYPE</b>                        | Normal without built-in slope  |
| <b>2) GRID</b>                             | 4R05GS1  |
| <b>GRID TYPE</b>                           | Ductile-iron Grid  |
| <b>MATERIAL</b>                            | Ductile-Iron GJS500-7 : EN1563   |
| <b>SURFACE FINISH</b>                      | Paint coating  |



| Article dimensions mm | Inner width mm | Runoff section cmq | Weight Kg/each |
|-----------------------|----------------|--------------------|----------------|
| 2000 x 470 x H 630    | 300            | 1.455              | 745,3          |