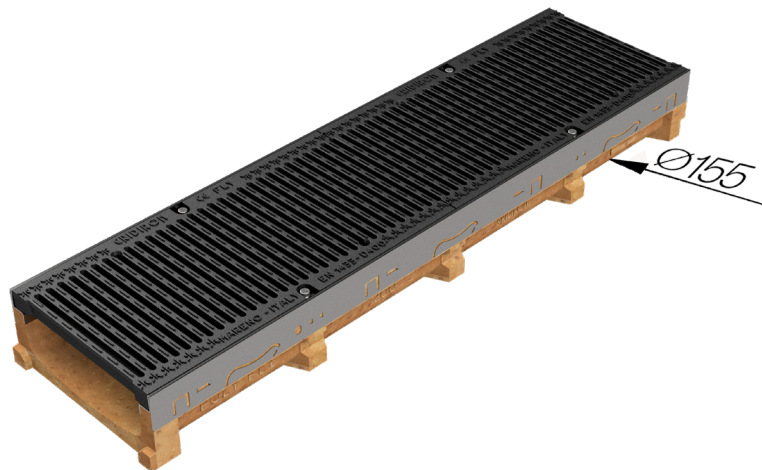
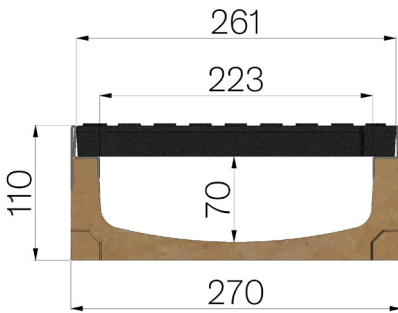


## TECHNICAL SHEET



<b>ASSEMBLED CODE</b>	4G2CSGSA
<b>DESCRIPTION</b>	Polymer concrete channel MOD. POLY FLY 200 LOW, with galvanized steel protective edge rails, c/w embossed metal sheet solid plate Th. 30/10, reinforced and hot-dip galvanised, installed and locked. Channel runoff section cm <sup>2</sup> 137. Load class D400 according to EN 1433:2008 Norm, if installed following manufacturer instructions. !da duplicazione!
<b>PRODUCT LINE</b>	Drainage channel type "M"
<b>STANDARD</b>	EN 1433:2008
<b>LOADING CLASS</b>	D400 - EN 1433:2008
<b>INTENDED USE OR USES OF THE PRODUCT</b>	Collection and channelling of surface water into areas subject to pedestrian and/or vehicle traffic according to the indicated flow rate.
<b>DURABILITY</b>	NPD
<b>QUANTITY PER PACK</b>	32
<b>1) CHANNEL</b>	4G2CS
<b>MATERIAL</b>	Polymer Concrete
<b>SERIES TYPE</b>	Polyfly series 200
<b>SECTION TYPE</b>	Low
<b>PROFILE TYPE</b>	Galvanized edge
<b>VERSION TYPE</b>	Normal without built-in slope
<b>WATER FLOW LT / SEC</b>	0,5%=11,8 - 1%=16,7 - 1,5%=20,5 - 2%=23,7 - 3%=29
<b>2) GRID</b>	4D22GSA
<b>GRID TYPE</b>	Ductile-iron Grid
<b>MATERIAL</b>	Ductile-Iron GJS500-7 : EN1563
<b>SURFACE FINISH</b>	Paint coating



Article dimensions mm	Inner width mm	Runoff section cmq	Bottom outlet mm	Weight Kg/each
1000 x 270 x H 110	223	137	Ø155	40,5