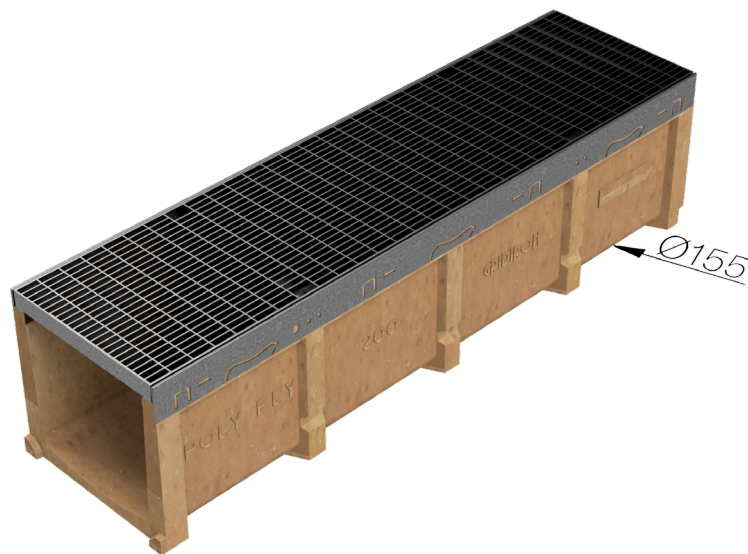
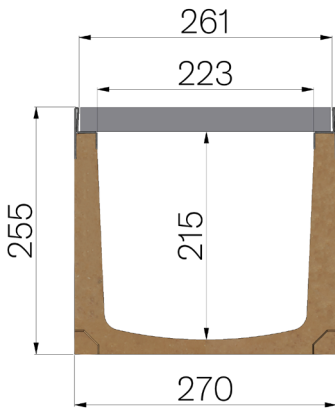


TECHNICAL SHEET



ASSEMBLED CODE	4G23SX3
DESCRIPTION	Polymer concrete channel MOD. POLY FLY 200, with AISI 304 stainless steel protective edge rails, c/w AISI 304 stainless steel pressure-locked grating, 25x2-10x2, 33x11 heelguard mesh, pickled, installed and locked. Channel runoff section cm ² 448. Load class C250 according to EN 1433:2008 Norm, if installed following manufacturer instructions.
PRODUCT LINE	Drainage channel type "M"
STANDARD	EN 1433:2008
LOADING CLASS	C250 - EN 1433:2008
INTENDED USE OR USES OF THE PRODUCT	Collection and channelling of surface water into areas subject to pedestrian and/or vehicle traffic according to the indicated flow rate.
DURABILITY	NPD
QUANTITY PER PACK	24
1) CHANNEL	4G23S
MATERIAL	Polymer Concrete
SERIES TYPE	Polyfly series 200
SECTION TYPE	Standard
PROFILE TYPE	Stainless Steel Profiles
VERSION TYPE	Normal without built-in slope
2) GRID	4D23X3
GRID TYPE	Press-locked
MATERIAL	Inox AISI 304 - X5 CrNi 18 10
SURFACE FINISH	Pickled



Article dimensions mm	Inner width mm	Runoff section cmq	Bottom outlet mm	Weight Kg/each
1000 x 270 x H 255	223	448	Ø155	37,42