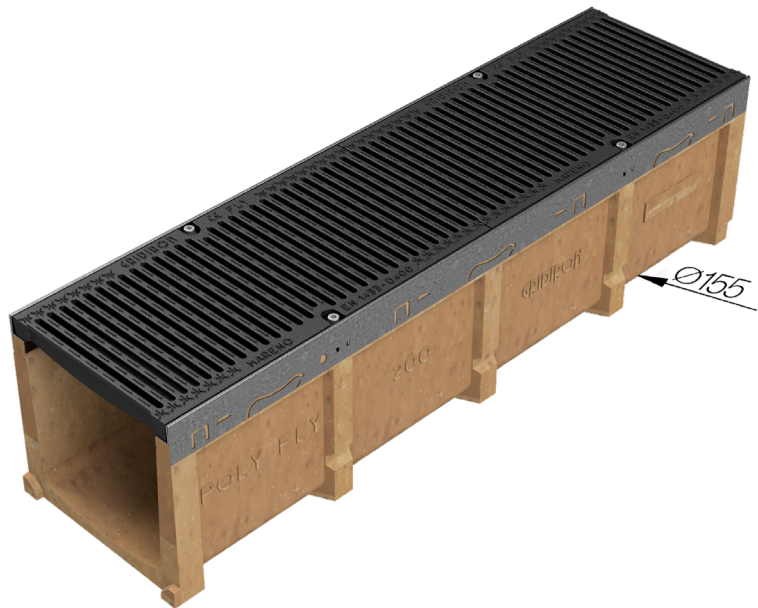
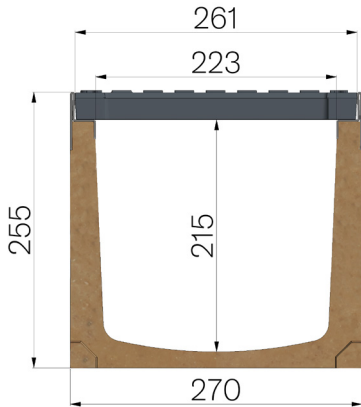


TECHNICAL SHEET



ASSEMBLED CODE	4G22SGSA
DESCRIPTION	Polymer concrete channel MOD. POLY FLY 200, with galvanized steel protective edge rails, c/w 2 x GJS500-7 ductile iron 6 mm slot (heelguard) gratings, painted, installed and locked. Channel runoff section sqcm. 448. Load class D400 according to EN 1433:2008 Norm, if installed following manufacturer instructions.
PRODUCT LINE	Drainage channel type "M"
STANDARD	EN 1433:2008
LOADING CLASS	D400 - EN 1433:2008
INTENDED USE OR USES OF THE PRODUCT	Collection and channelling of surface water into areas subject to pedestrian and/or vehicle traffic according to the indicated flow rate.
DURABILITY	NPD
QUANTITY PER PACK	24
1) CHANNEL	4G22S
MATERIAL	Polymer Concrete
SERIES TYPE	Polyfly series 200
SECTION TYPE	Standard
PROFILE TYPE	Galvanized edge
VERSION TYPE	Normal without built-in slope
WATER FLOW LT / SEC	0,5%=55,3 - 1%=78,2 - 1,5%=95,8 - 2%=110 - 3%=135
2) GRID	4D22GSA
GRID TYPE	Ductile-iron Grid
MATERIAL	Ductile-Iron GJS500-7 : EN1563
SURFACE FINISH	Paint coating



Article dimensions mm	Inner width mm	Runoff section cmq	Bottom outlet mm	Weight Kg/each
1000 x 270 x H 255	223	448	155	51,43