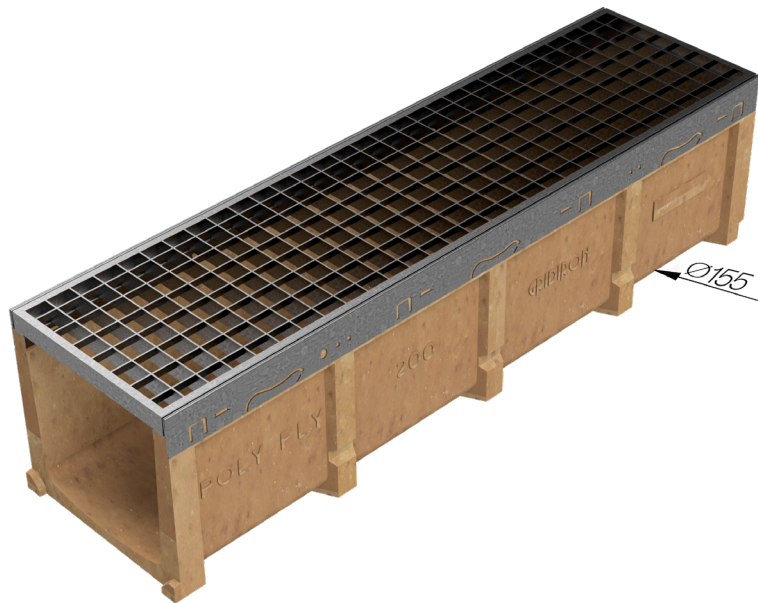
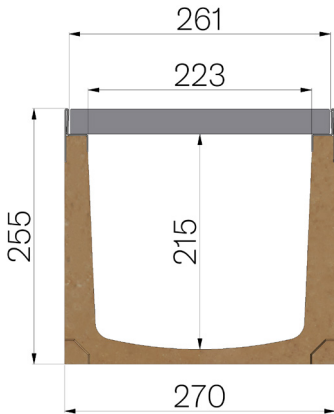


TECHNICAL SHEET



ASSEMBLED CODE	4G22SG1
DESCRIPTION	Polymer concrete channel MOD. POLY FLY 200, with galvanized steel protective edge rails, c/w S235JR steel pressure-locked grating, 25x2-10x2, 33x33 mesh, hot-dip galvanised, installed and locked. Channel runoff section sqcm. 448. Load class C250 according to EN 1433:2008 Norm, if installed following manufacturer instructions.
PRODUCT LINE	Drainage channel type "M"
STANDARD	EN 1433:2008
LOADING CLASS	C250 - EN 1433:2008
INTENDED USE OR USES OF THE PRODUCT	Collection and channelling of surface water into areas subject to pedestrian and/or vehicle traffic according to the indicated flow rate.
DURABILITY	NPD
QUANTITY PER PACK	24
1) CHANNEL	4G22S
MATERIAL	Polymer Concrete
SERIES TYPE	Polyfly series 200
SECTION TYPE	Standard
PROFILE TYPE	Galvanized edge
VERSION TYPE	Normal without built-in slope
WATER FLOW LT / SEC	0,5%=55,3 - 1%=78,2 - 1,5%=95,8 - 2%=110 - 3%=135
2) GRID	4D22G1
GRID TYPE	Press-locked
MATERIAL	Carbon Steel S235JR acc. to EN 10025-2:2019
SURFACE FINISH	Hot Dip Galvanizing - UNI 1461



Article dimensions mm	Inner width mm	Runoff section cmq	Bottom outlet mm	Weight Kg/each
1000 x 270 x H 255	223	448	155	34,77